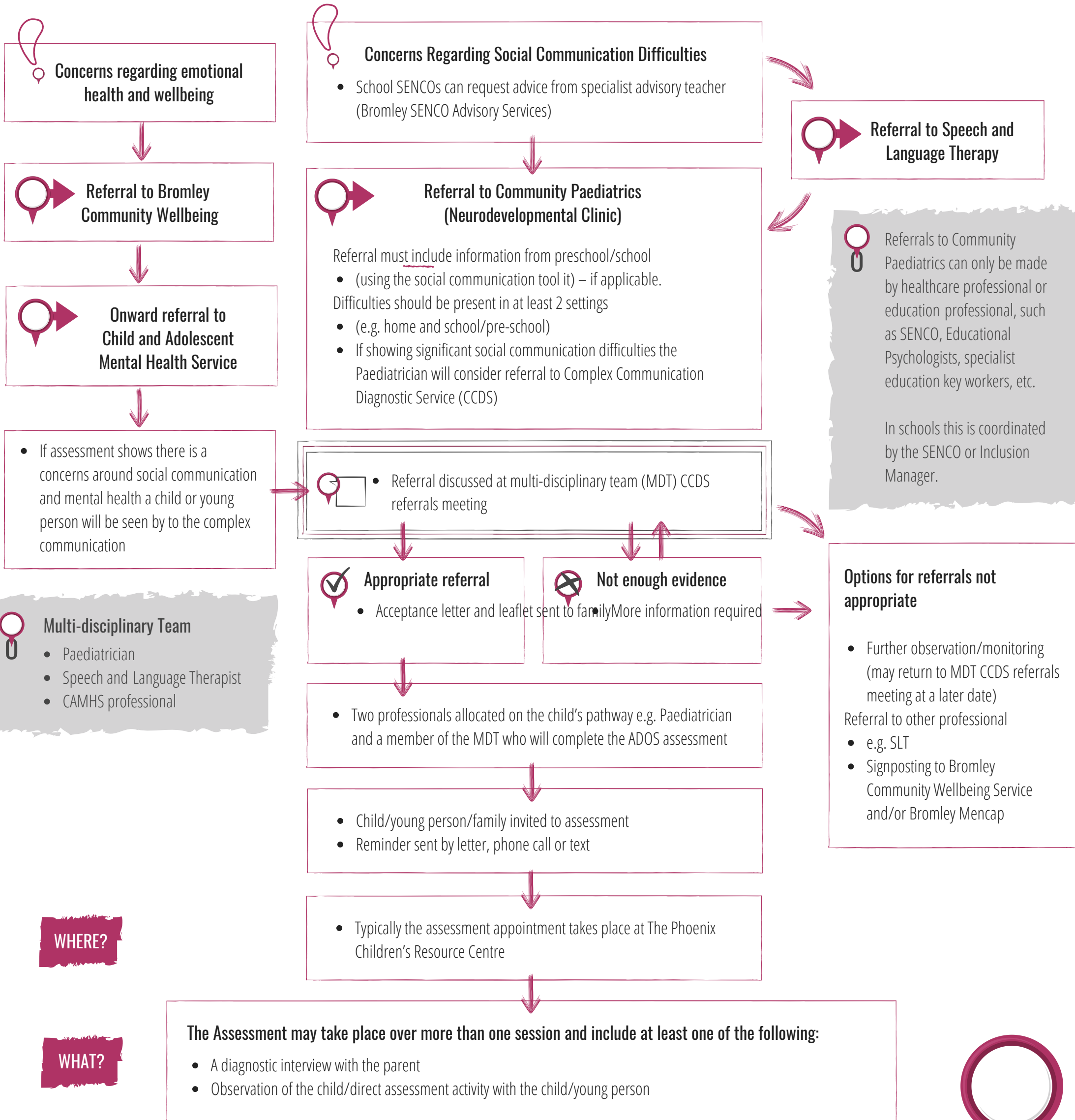


Social Communication Difficulties (SCD) Pathway

This flowchart sets out the pathway through local services for children up to 18 years old with concerns regarding their Social Communication Difficulties (SCD)



Flowchart page 2 // continued from page 1

HOW?



Decision making

- Clinicians agree diagnosis based on assessment information

- Parent/carer/family/young person sent a letter to invite them to a face to face feedback meeting with the assessment team
- Pre-school/school also invited to attend
- Assessment findings/diagnosis discussed with parent/carer/family/young person
- Opportunity for parent/carer/family/young person to comment and ask questions
- Jointly discuss treatment options and action plan and agree with parents
- Family are referred to Bromley Mencap - their contact details are passed to Mencap with parent/carer/family/young person's verbal consent
- Brief written Action Plan provided at the end of this meeting
- CCDS Written report circulated by post up to 6 weeks after feedback meeting

Possible outcome

- Discharge
- Ongoing concerns: may remain on paediatrician caseload
- Refer on to other therapeutic services

The Bromley Local Offer

Information on local services and support available for families including children and young people aged 0 - 25 years with special educational needs or disabilities

Visit www.bromley.gov.uk/localoffer

