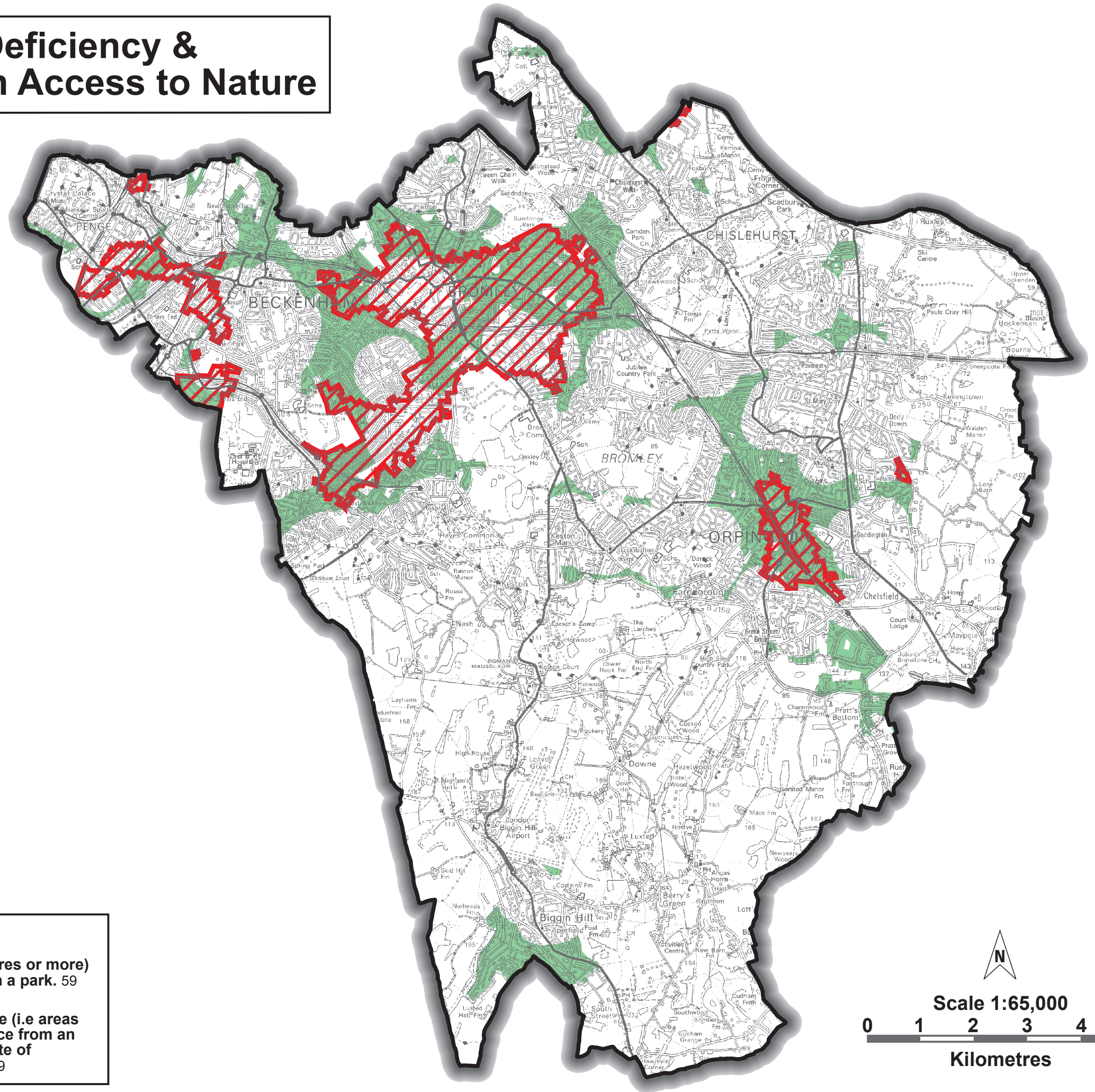


Areas of Local Park Deficiency & Areas of Deficiency in Access to Nature



Key



Areas deficient in Local Parks (2 hectares or more) i.e. more than 0.4 kilometres from such a park. 59



Areas of Deficiency in Access to Nature (i.e. areas that are more than 1km walking distance from an accessible Metropolitan or Borough Site of Importance for Nature Conservation) 79



Scale 1:65,000

0 1 2 3 4 5

Kilometres