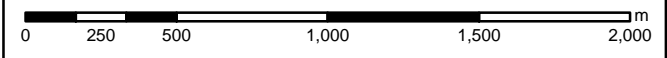
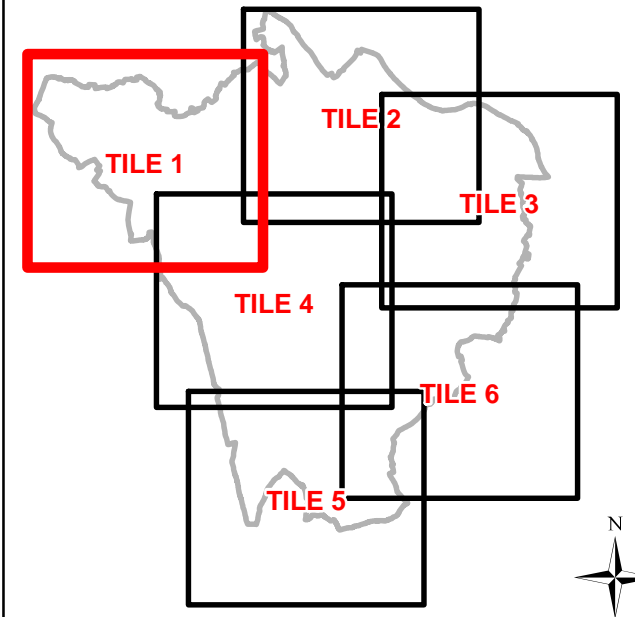


- Legend**
- Borough Boundary
 - Main River Culvert
 - Ordinary Watercourse Culvert
 - Main River
 - Ordinary Watercourses

- Flood Zones**
- Flood Zone 3B
 - Flood Zone 3
 - Flood Zone 2



Strategic Flood Risk Assessment

AECOM

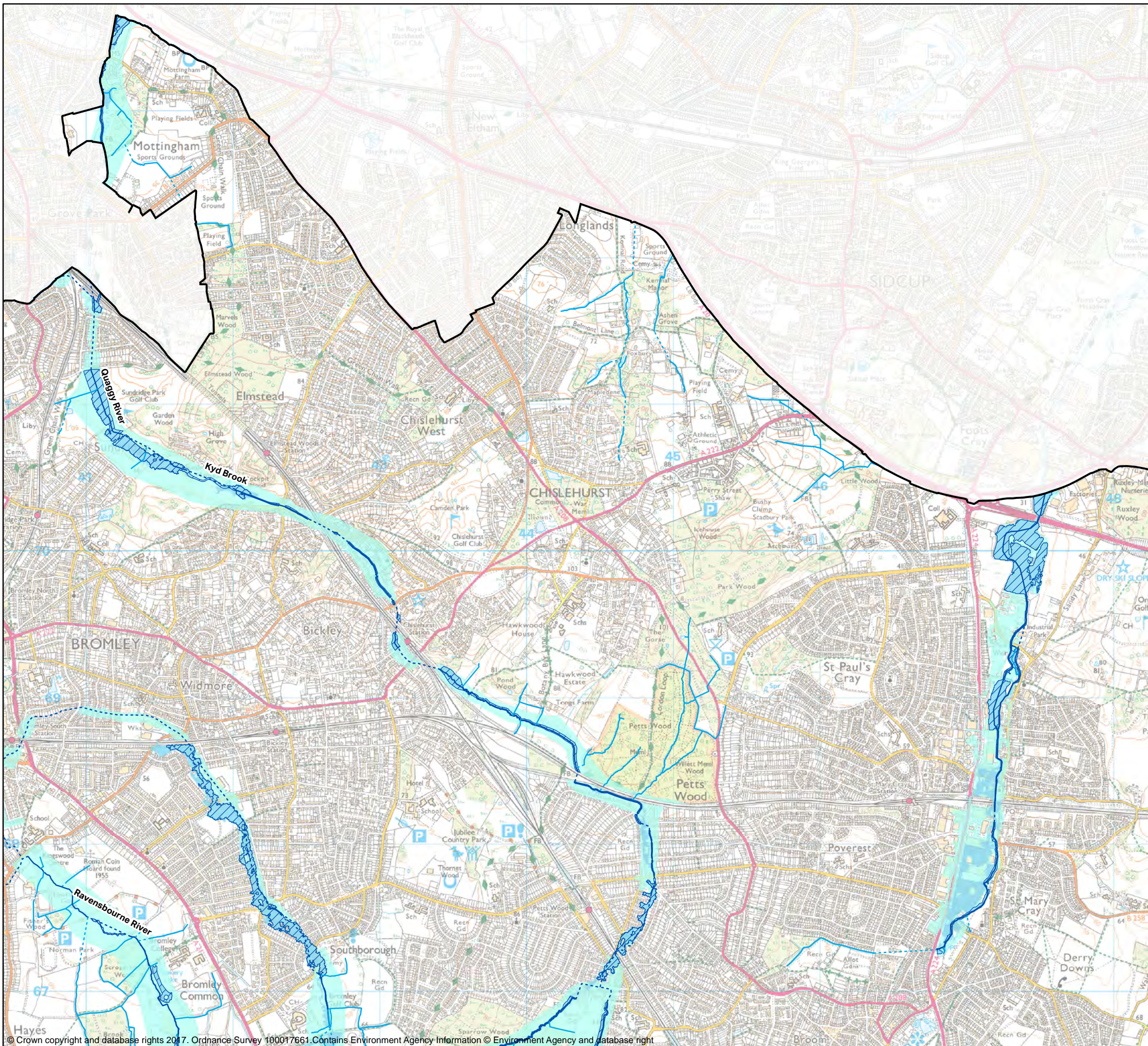
Sunley House, 4 Bedford Park
Croydon, Surrey, CR0 2AP
Tel: +44 (0) 208 639 3500
www.aecom.com

Risk of Flooding from Rivers and the Sea






| | | | |
|------------|----------------|-----------------|---------------------|
| GIS: SB | Checked: BN | Approved: GP | Date: 28/02/2017 |
|------------|----------------|-----------------|---------------------|

| | | |
|----------------|--------|--------------------|
| Map no: 005 | Tile 1 | Scale: 1:25,000 |
|----------------|--------|--------------------|



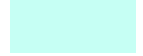
This document has been prepared by AECOM Limited ("AECOM") for the sole use of our Client, and in accordance with generally accepted consultancy principles, the budget for fees and the terms of reference agreed between AECOM and the Client. Any information provided by third parties and referred to herein has not been checked or verified by AECOM, unless otherwise expressly stated in the document. No third party may rely upon this document without the prior and express written agreement of AECOM.

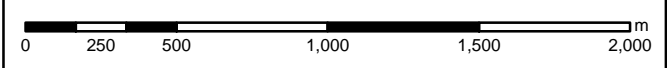
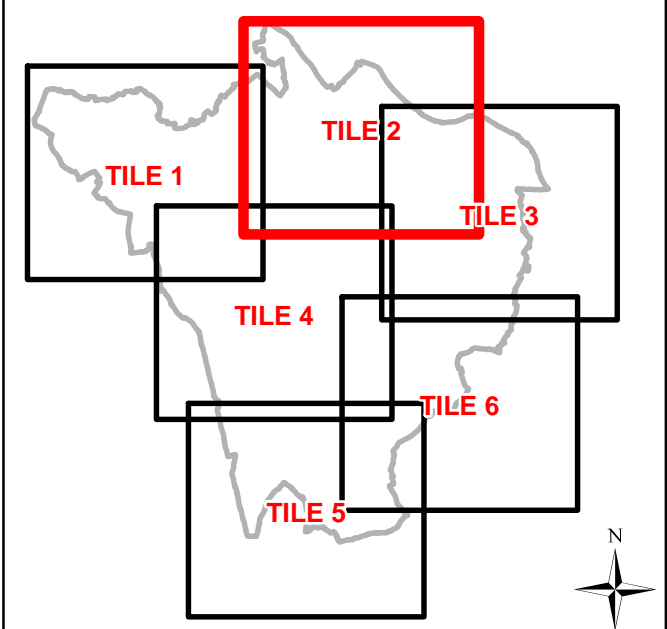


Legend

-  Borough Boundary
-  Main River Culvert
-  Ordinary Watercourse Culvert
-  Main River
-  Ordinary Watercourses

Flood Zones

-  Flood Zone 3B
-  Flood Zone 3
-  Flood Zone 2



Strategic Flood Risk Assessment



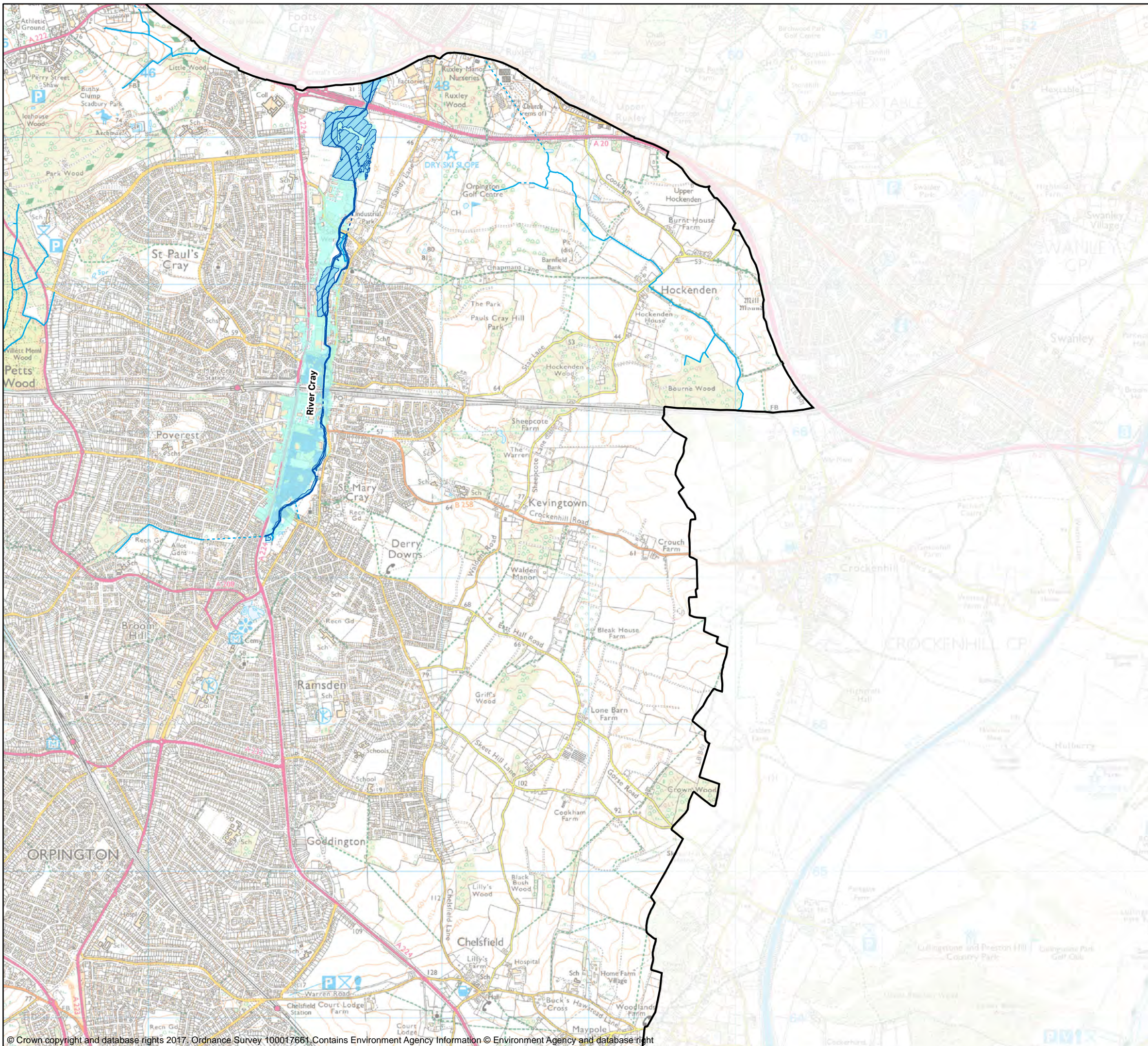
Sunley House, 4 Bedford Park
Croydon, Surrey, CR0 2AP
Tel: +44 (0) 208 639 3500
www.aecom.com

Risk of Flooding from Rivers and the Sea






| | | | |
|------------|----------------|-----------------|---------------------|
| GIS: SB | Checked: BN | Approved: GP | Date: 28/02/2017 |
|------------|----------------|-----------------|---------------------|

| | | |
|----------------|--------|--------------------|
| Map no: 005 | Tile 2 | Scale: 1:25,000 |
|----------------|--------|--------------------|



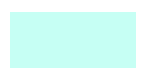
This document has been prepared by AECOM Limited ("AECOM") for the sole use of our Client, and in accordance with generally accepted consultancy principles, the budget for fees and the terms of reference agreed between AECOM and the Client. Any information provided by third parties and referred to herein has not been checked or verified by AECOM, unless otherwise expressly stated in the document. No third party may rely upon this document without the prior and express written agreement of AECOM.

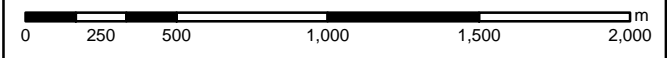
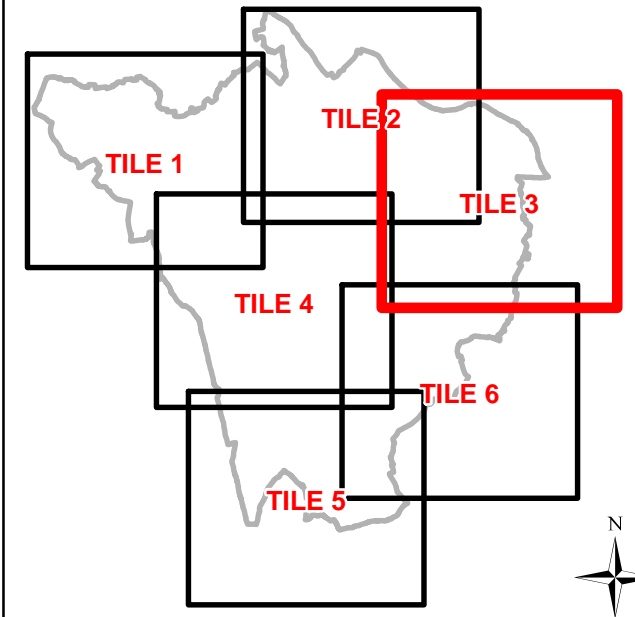


Legend

-  Borough Boundary
-  Main River Culvert
-  Ordinary Watercourse Culvert
-  Main River
-  Ordinary Watercourses

Flood Zones

-  Flood Zone 3B
-  Flood Zone 3
-  Flood Zone 2



Strategic Flood Risk Assessment



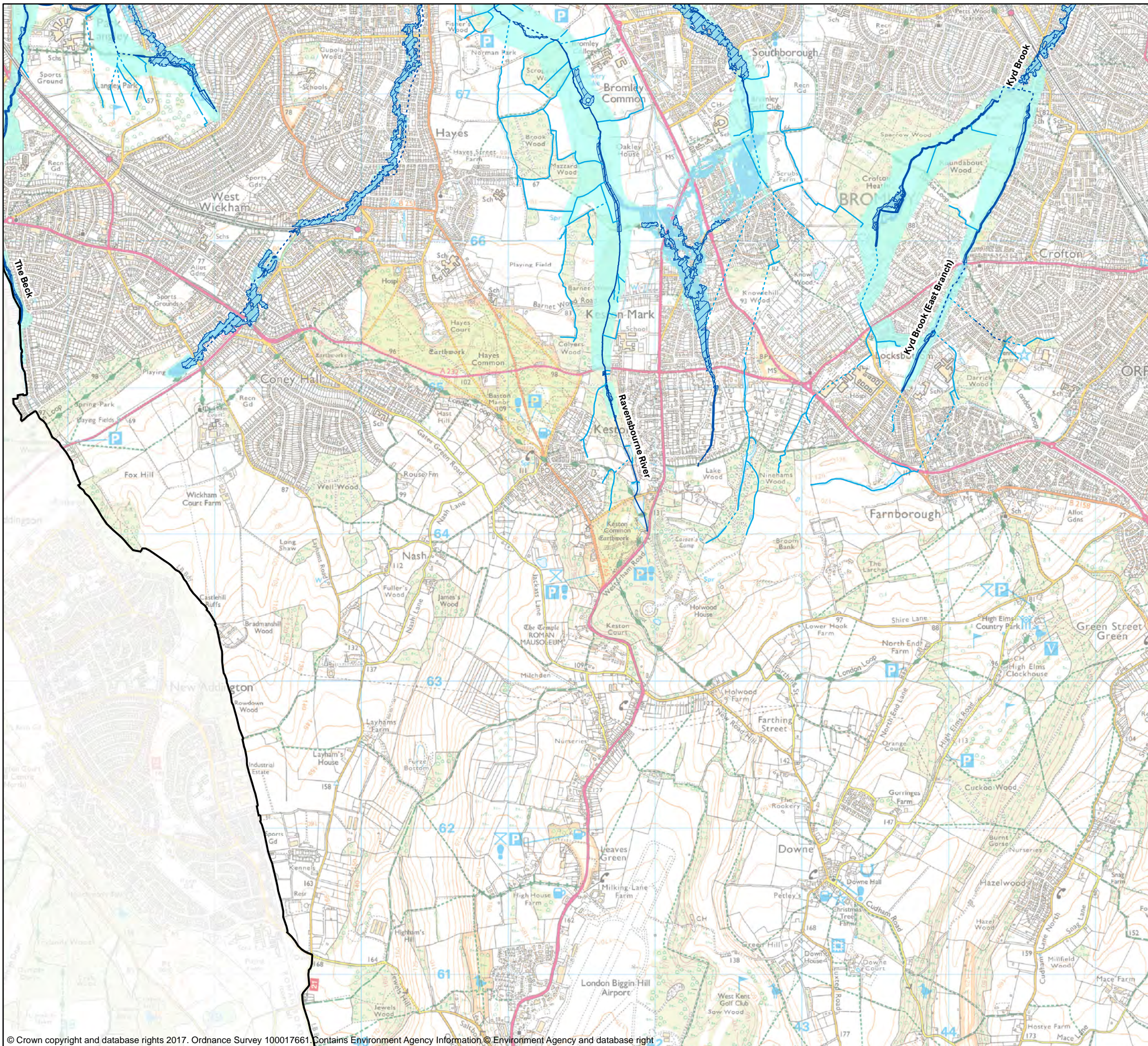
Sunley House, 4 Bedford Park
Croydon, Surrey, CR0 2AP
Tel: +44 (0) 208 639 3500
www.aecom.com

Risk of Flooding from Rivers and the Sea

| | | | |
|------------|----------------|-----------------|---------------------|
| GIS: SB | Checked: BN | Approved: GP | Date: 28/02/2017 |
|------------|----------------|-----------------|---------------------|

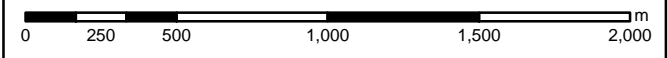
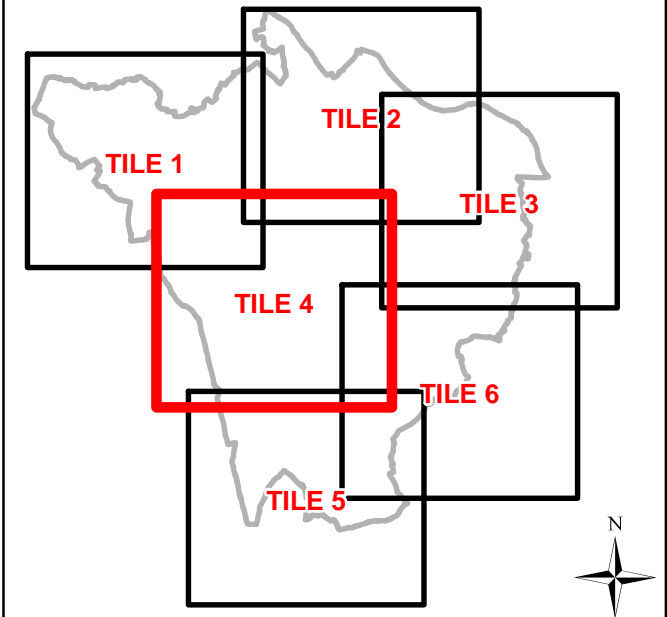
| | | |
|----------------|--------|--------------------|
| Map no: 005 | Tile 3 | Scale: 1:25,000 |
|----------------|--------|--------------------|

This document has been prepared by AECOM Limited ("AECOM") for the sole use of our Client, and in accordance with generally accepted consultancy principles, the budget for fees and the terms of reference agreed between AECOM and the Client. Any information provided by third parties and referred to herein has not been checked or verified by AECOM, unless otherwise expressly stated in the document. No third party may rely upon this document without the prior and express written agreement of AECOM.



- Legend**
- Borough Boundary
 - Main River Culvert
 - Ordinary Watercourse Culvert
 - Main River
 - Ordinary Watercourses

- Flood Zones**
- Flood Zone 3B
 - Flood Zone 3
 - Flood Zone 2



Strategic Flood Risk Assessment

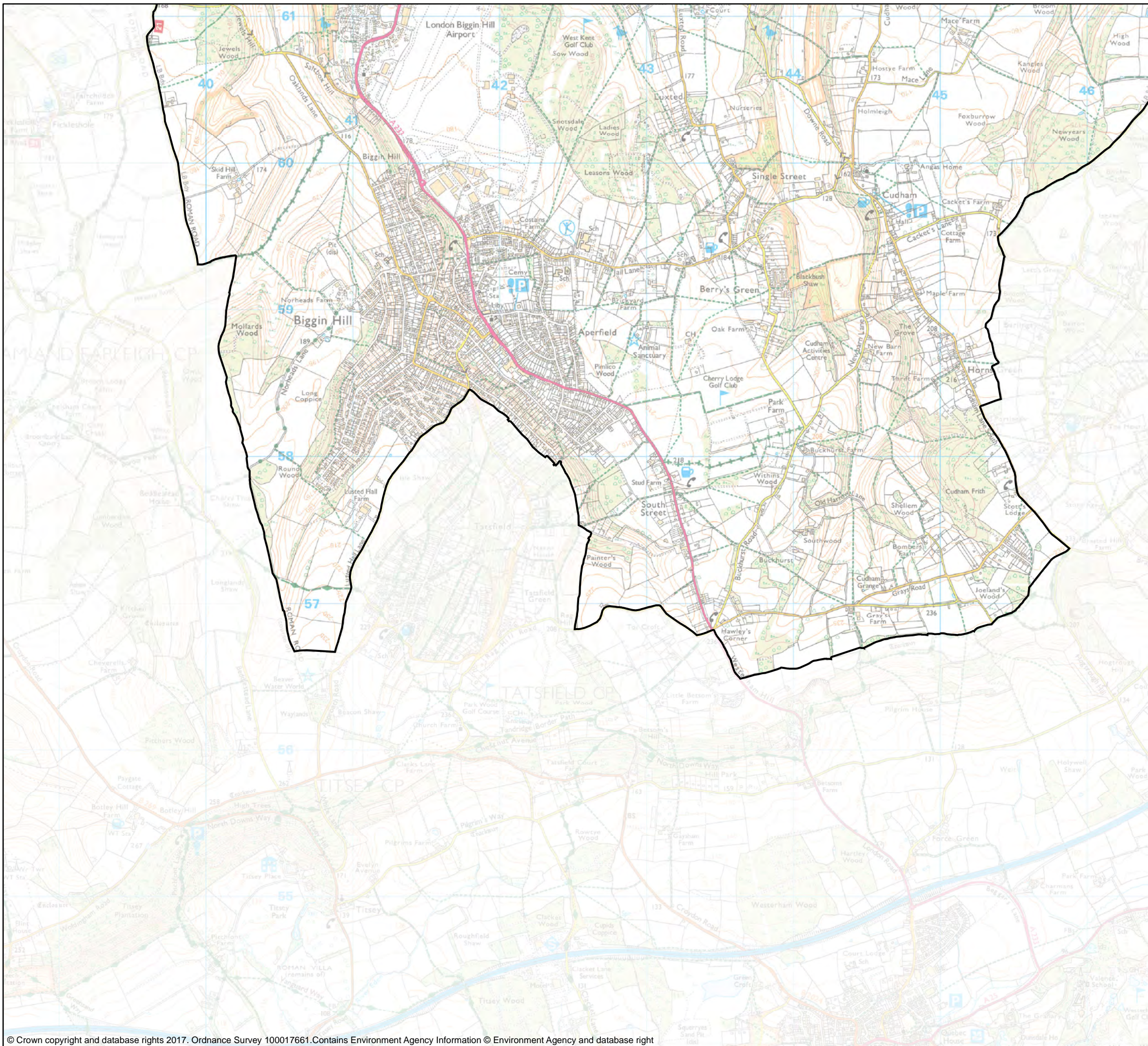
AECOM Sunley House, 4 Bedford Park
Croydon, Surrey, CR0 2AP
Tel: +44 (0) 208 639 3500
www.aecom.com

Risk of Flooding from Rivers and the Sea






| | | | |
|------------|----------------|-----------------|---------------------|
| GIS: SB | Checked: BN | Approved: GP | Date: 28/02/2017 |
|------------|----------------|-----------------|---------------------|

| | | |
|----------------|--------|--------------------|
| Map no: 005 | Tile 4 | Scale: 1:25,000 |
|----------------|--------|--------------------|



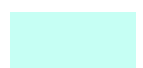
This document has been prepared by AECOM Limited ("AECOM") for the sole use of our Client, and in accordance with generally accepted consultancy principles, the budget for fees and the terms of reference agreed between AECOM and the Client. Any information provided by third parties and referred to herein has not been checked or verified by AECOM, unless otherwise expressly stated in the document. No third party may rely upon this document without the prior and express written agreement of AECOM.

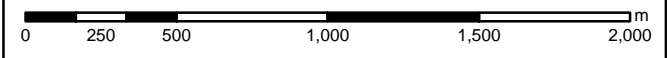
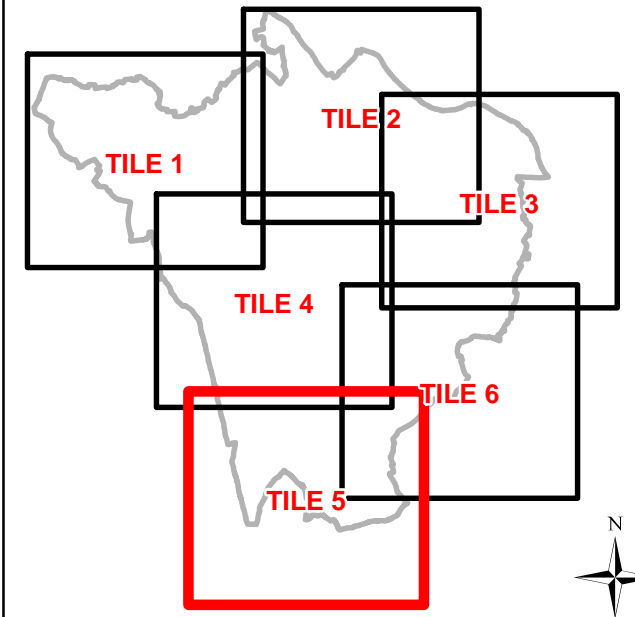


Legend

-  Borough Boundary
-  Main River Culvert
-  Ordinary Watercourse Culvert
-  Main River
-  Ordinary Watercourses

Flood Zones

-  Flood Zone 3B
-  Flood Zone 3
-  Flood Zone 2



Strategic Flood Risk Assessment



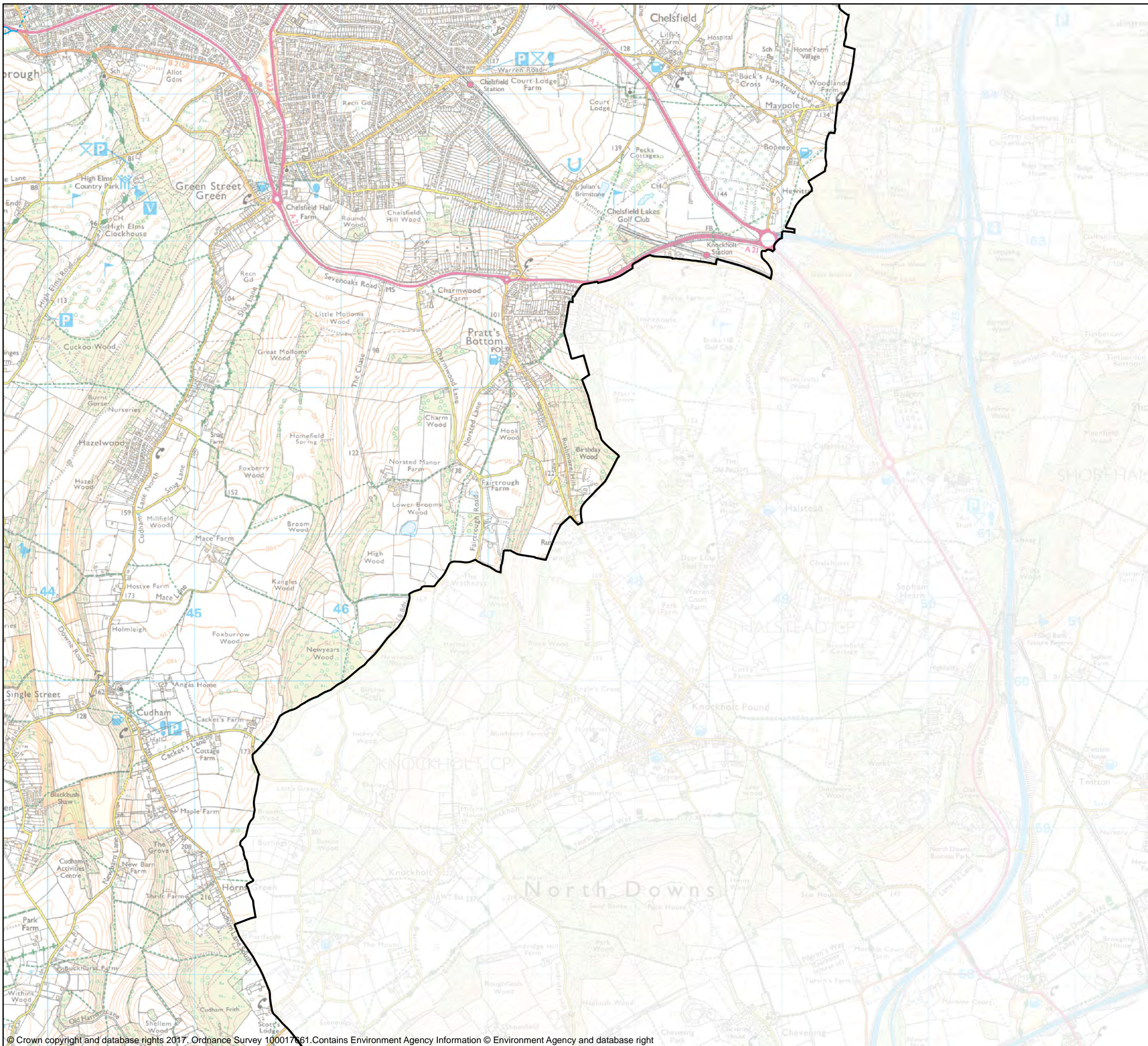
Sunley House, 4 Bedford Park
Croydon, Surrey, CR0 2AP
Tel: +44 (0) 208 639 3500
www.aecom.com

Risk of Flooding from Rivers and the Sea






| | | | |
|------------|----------------|-----------------|---------------------|
| GIS: SB | Checked: BN | Approved: GP | Date: 28/02/2017 |
|------------|----------------|-----------------|---------------------|

| | | |
|----------------|--------|--------------------|
| Map no: 005 | Tile 5 | Scale: 1:25,000 |
|----------------|--------|--------------------|



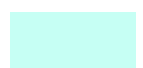
This document has been prepared by AECOM Limited ("AECOM") for the sole use of our Client, and in accordance with generally accepted consultancy principles, the budget for fees and the terms of reference agreed between AECOM and the Client. Any information provided by third parties and referred to herein has not been checked or verified by AECOM, unless otherwise expressly stated in the document. No third party may rely upon this document without the prior and express written agreement of AECOM.

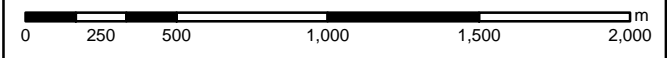
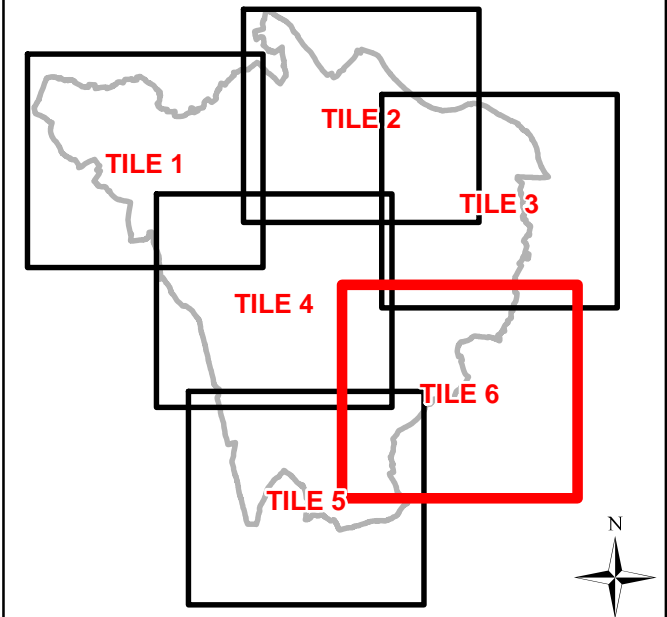


Legend

-  Borough Boundary
-  Main River Culvert
-  Ordinary Watercourse Culvert
-  Main River
-  Ordinary Watercourses

Flood Zones

-  Flood Zone 3B
-  Flood Zone 3
-  Flood Zone 2



Strategic Flood Risk Assessment



Sunley House, 4 Bedford Park
Croydon, Surrey, CR0 2AP
Tel: +44 (0) 208 639 3500
www.aecom.com

Risk of Flooding from Rivers and the Sea

| | | | |
|------------|----------------|-----------------|---------------------|
| GIS: SB | Checked: BN | Approved: GP | Date: 28/02/2017 |
|------------|----------------|-----------------|---------------------|

| | | |
|----------------|--------|--------------------|
| Map no: 005 | Tile 6 | Scale: 1:25,000 |
|----------------|--------|--------------------|

This document has been prepared by AECOM Limited ("AECOM") for the sole use of our Client, and in accordance with generally accepted consultancy principles, the budget for fees and the terms of reference agreed between AECOM and the Client. Any information provided by third parties and referred to herein has not been checked or verified by AECOM, unless otherwise expressly stated in the document. No third party may rely upon this document without the prior and express written agreement of AECOM.