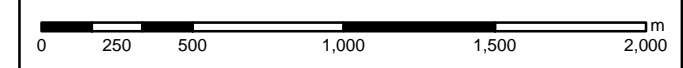
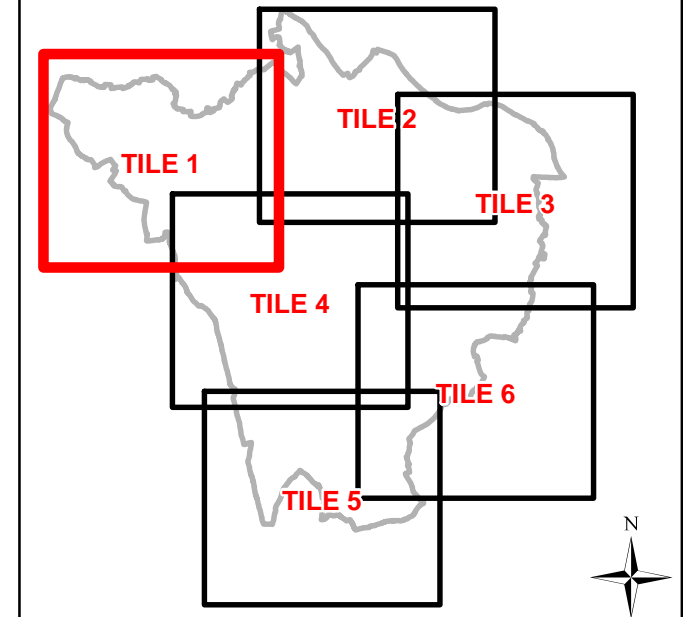


Legend

- Borough Boundary
- Main River Culvert
- Ordinary Watercourse Culvert
- Main River
- Ordinary Watercourses

SuDS Suitability

- Highly Suitable
- Probably Suitable
- Potentially Suitable for Bespoke Designs
- Unlikely to be Suitable



THE LONDON BOROUGH
Strategic Flood Risk Assessment

Sunley House, 4 Bedford Park
Croydon, Surrey, CR0 2AP
Tel: +44 (0) 208 639 3500
www.aecom.com

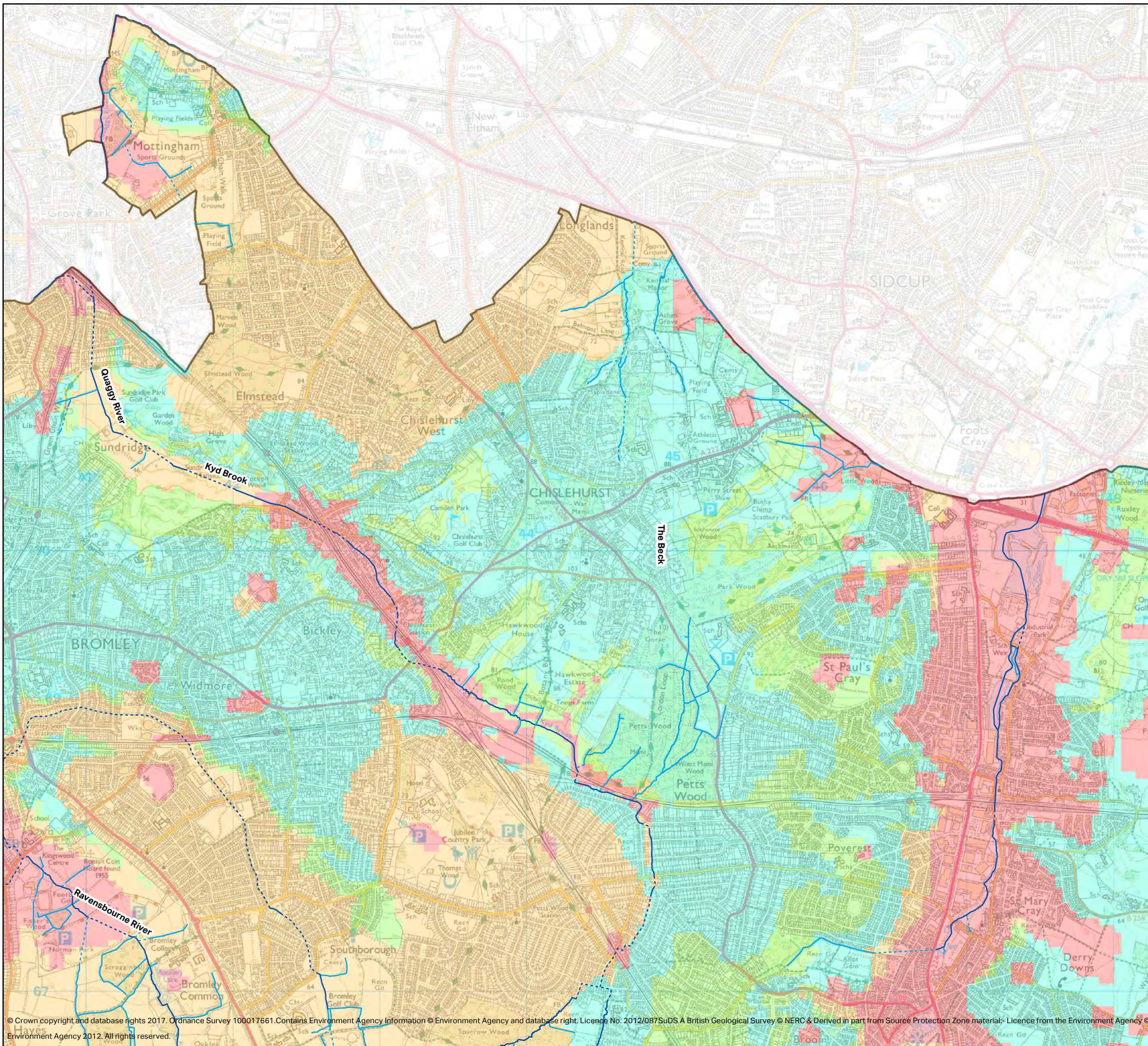
SuDS Infiltration Suitability

GIS: SB	Checked: JB	Approved: GP	Date: 06/04/2017
------------	----------------	-----------------	---------------------

Map no: 010	Tile 1	Scale: 1:25,000
-------------	--------	-----------------

© Crown copyright and database rights 2017. Ordnance Survey 100017661. Contains Environment Agency Information © Environment Agency and database right. Licence No. 2012/0875 SuDS A British Geological Survey © NERC & Derived in part from Source Protection Zone material - Licence from the Environment Agency © Environment Agency 2012. All rights reserved.

This document has been prepared by AECOM Limited ("AECOM") for the sole use of our Client, and in accordance with generally accepted consultancy principles, the budget for fees and the terms of reference agreed between AECOM and the Client. Any information provided by third parties and referred to herein has not been checked or verified by AECOM, unless otherwise expressly stated in the document. No third party may rely upon this document without the prior and express written agreement of AECOM.

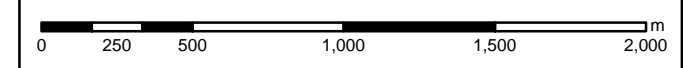
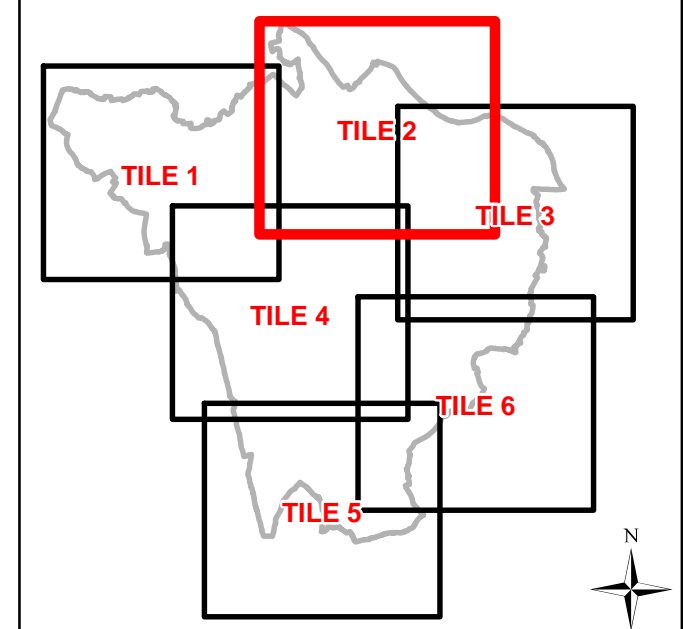


Legend

- Borough Boundary
- Main River Culvert
- Ordinary Watercourse Culvert
- Main River
- Ordinary Watercourses

SuDS Suitability

- Highly Suitable
- Probably Suitable
- Potentially Suitable for Bespoke Designs
- Unlikely to be Suitable



THE LONDON BOROUGH

Strategic Flood Risk Assessment

Sunley House, 4 Bedford Park
Croydon, Surrey, CR0 2AP
Tel: +44 (0) 208 639 3500
www.aecom.com

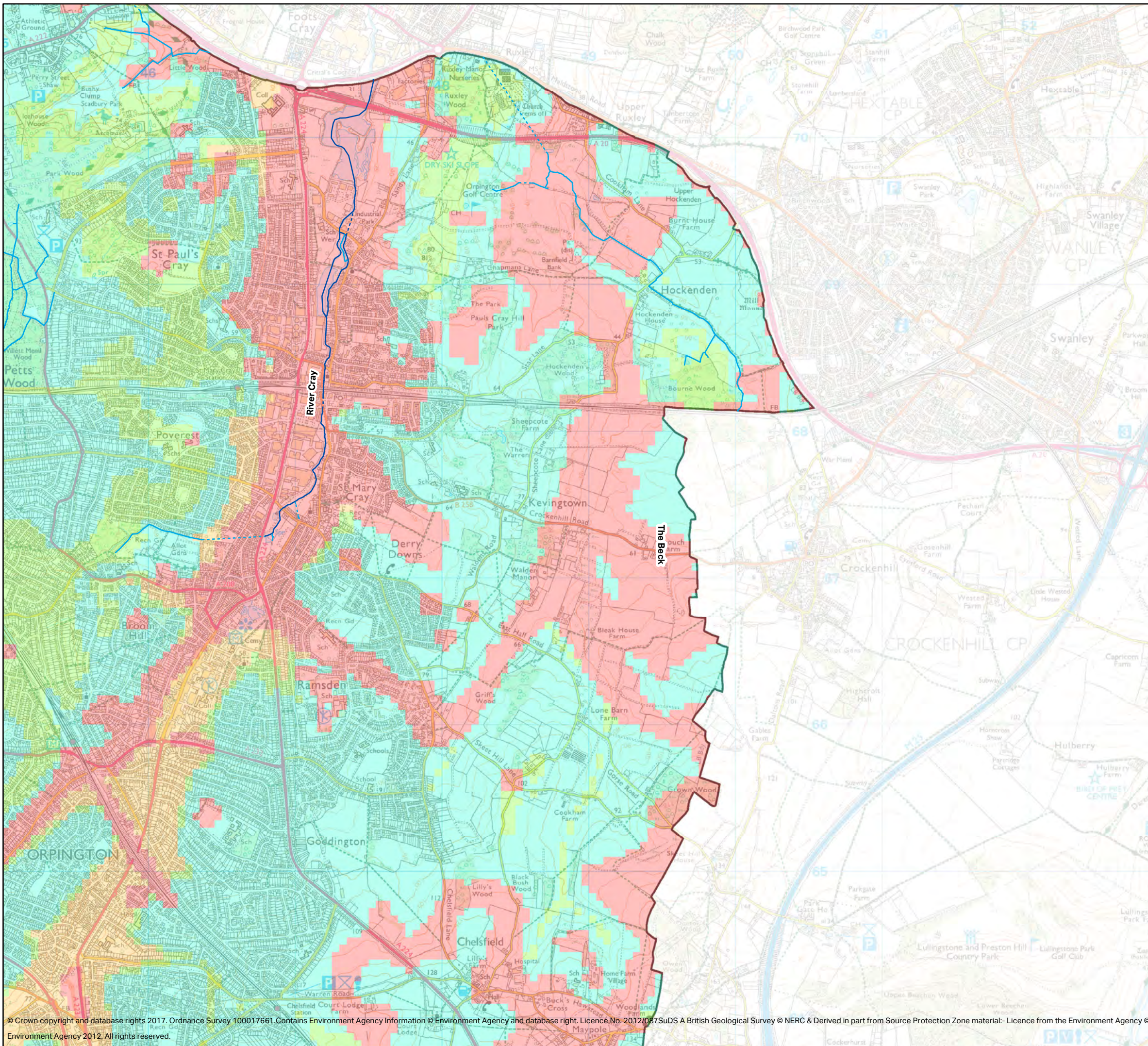
SuDS Infiltration Suitability

GIS: SB	Checked: JB	Approved: GP	Date: 06/04/2017
------------	----------------	-----------------	---------------------

Map no: 010	Tile 2	Scale: 1:25,000
-------------	--------	-----------------

© Crown copyright and database rights 2017. Ordnance Survey 100017661. Contains Environment Agency Information © Environment Agency and database right. Licence No. 2012/087/SuDS A British Geological Survey © NERC & Derived in part from Source Protection Zone material - Licence from the Environment Agency © Environment Agency 2012. All rights reserved.

This document has been prepared by AECOM Limited ("AECOM") for the sole use of our Client, and in accordance with generally accepted consultancy principles, the budget for fees and the terms of reference agreed between AECOM and the Client. Any information provided by third parties and referred to herein has not been checked or verified by AECOM, unless otherwise expressly stated in the document. No third party may rely upon this document without the prior and express written agreement of AECOM.

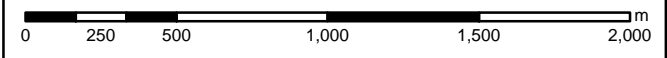
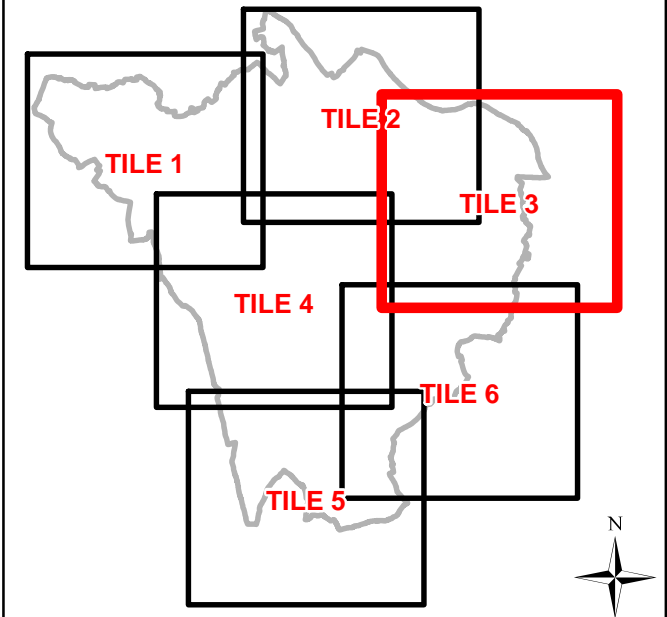


Legend

- Borough Boundary
- Main River Culvert
- Ordinary Watercourse Culvert
- Main River
- Ordinary Watercourses

SuDS Suitability

- Highly Suitable
- Probably Suitable
- Potentially Suitable for Bespoke Designs
- Unlikely to be Suitable




THE LONDON BOROUGH

Strategic Flood Risk Assessment



Sunley House, 4 Bedford Park
Croydon, Surrey, CR0 2AP
Tel: +44 (0) 208 639 3500
www.aecom.com

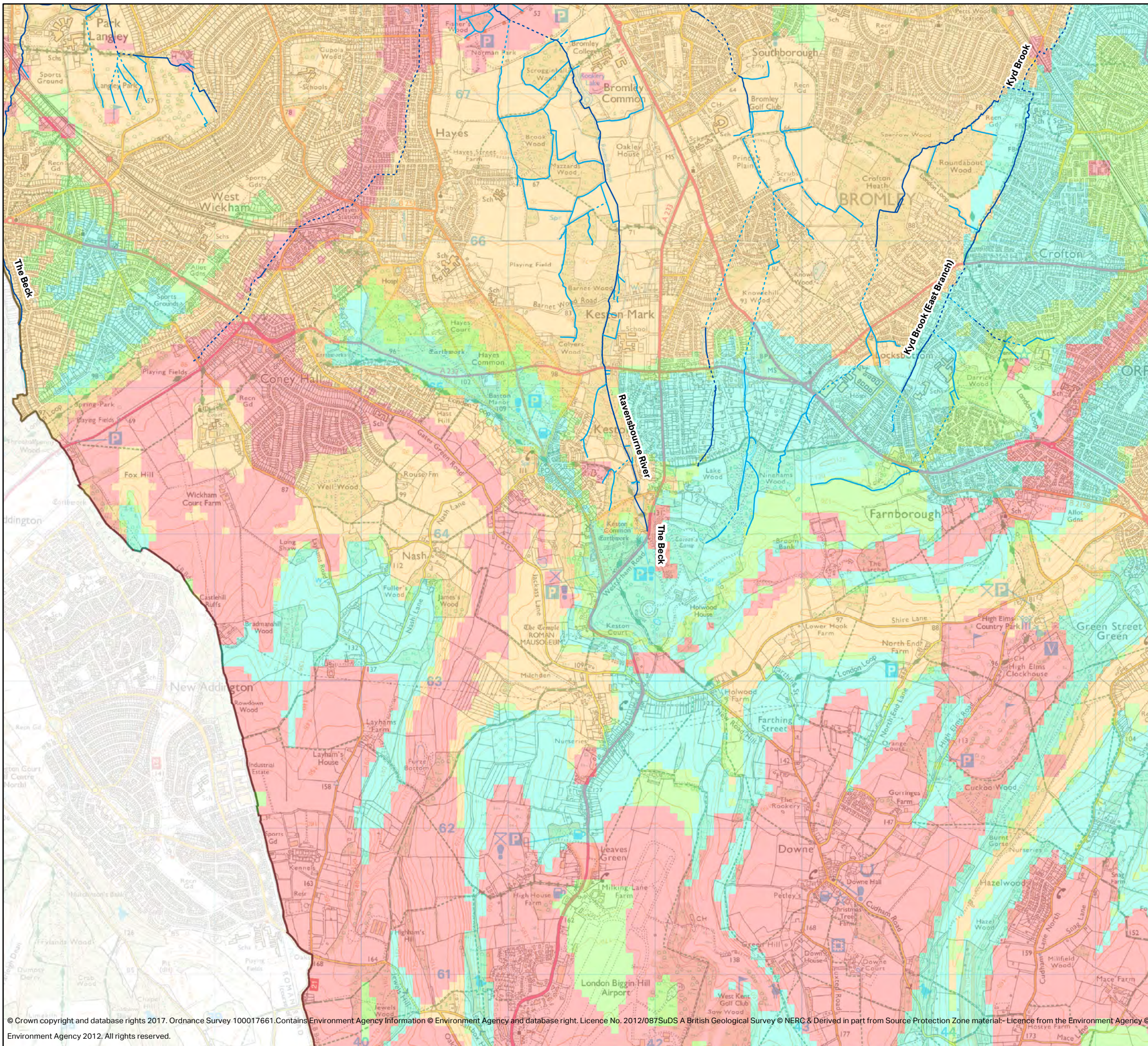
SuDS Infiltration Suitability

GIS: SB	Checked: JB	Approved: GP	Date: 06/04/2017
------------	----------------	-----------------	---------------------

Map no: 010	Tile 3	Scale: 1:25,000
-------------	--------	-----------------

© Crown copyright and database rights 2017. Ordnance Survey 100017661. Contains Environment Agency Information © Environment Agency and database right. Licence No. 2012/087/SuDS A British Geological Survey © NERC & Derived in part from Source Protection Zone material:- Licence from the Environment Agency © Environment Agency 2012. All rights reserved.

This document has been prepared by AECOM Limited ("AECOM") for the sole use of our Client, and in accordance with generally accepted consultancy principles, the budget for fees and the terms of reference agreed between AECOM and the Client. Any information provided by third parties and referred to herein has not been checked or verified by AECOM, unless otherwise expressly stated in the document. No third party may rely upon this document without the prior and express written agreement of AECOM.

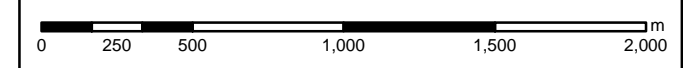
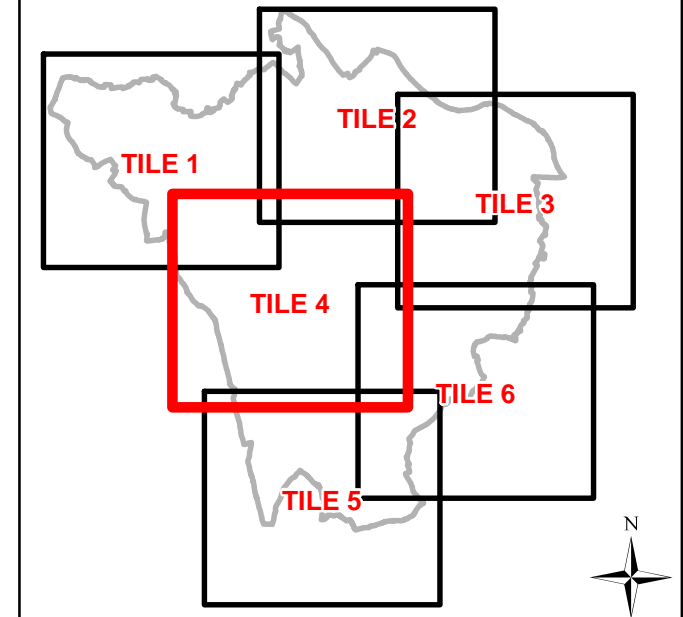


Legend

- Borough Boundary
- Main River Culvert
- Ordinary Watercourse Culvert
- Main River
- Ordinary Watercourses

SuDS Suitability

- Highly Suitable
- Probably Suitable
- Potentially Suitable for Bespoke Designs
- Unlikely to be Suitable



THE LONDON BOROUGH

Strategic Flood Risk Assessment

Sunley House, 4 Bedford Park
Croydon, Surrey, CR0 2AP
Tel: +44 (0) 208 639 3500
www.aecom.com

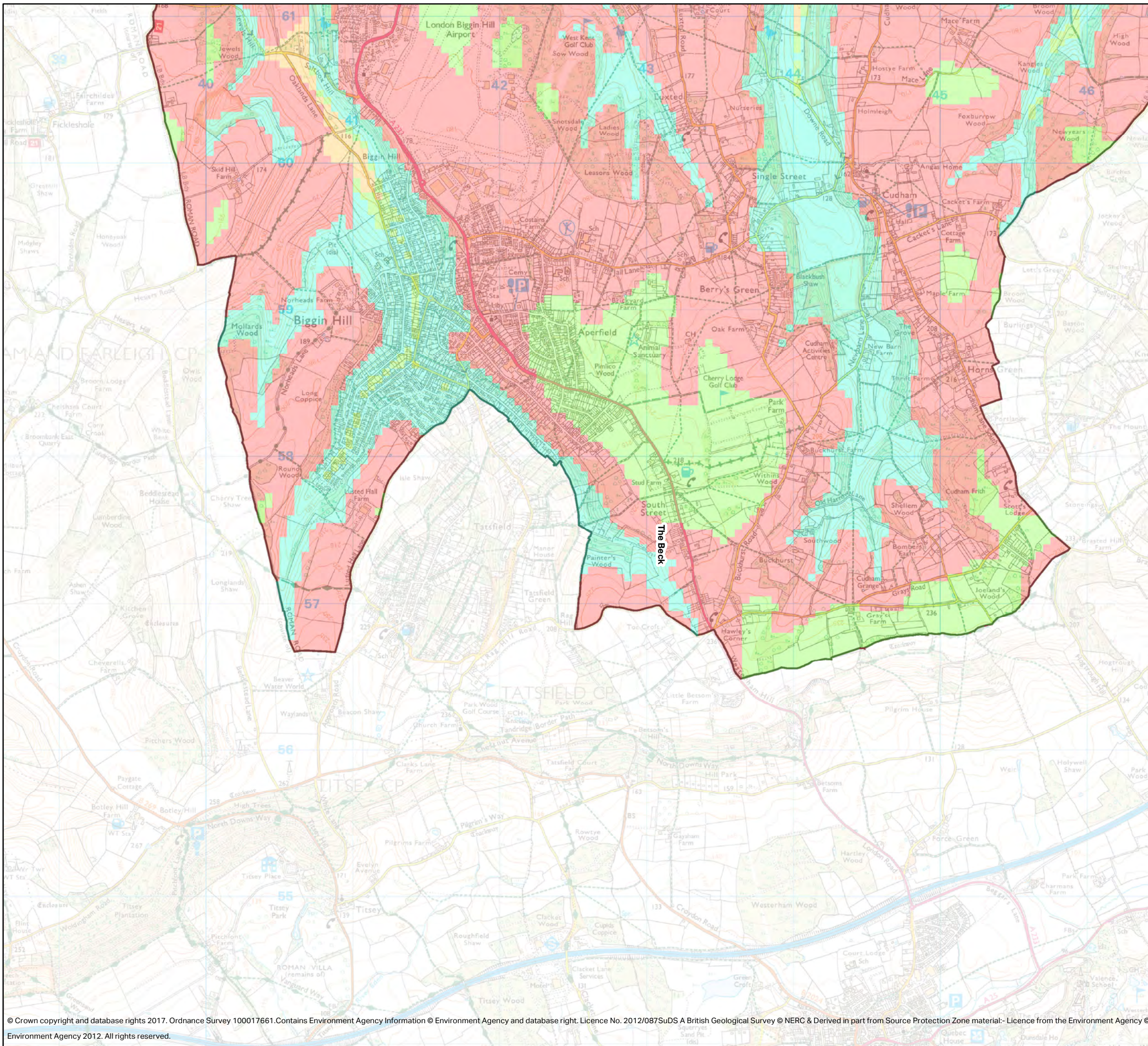
SuDS Infiltration Suitability

GIS: SB	Checked: JB	Approved: GP	Date: 06/04/2017
------------	----------------	-----------------	---------------------

Map no: 010	Tile 4	Scale: 1:25,000
-------------	--------	-----------------

© Crown copyright and database rights 2017. Ordnance Survey 100017661. Contains Environment Agency Information © Environment Agency and database right. Licence No. 2012/087SuDS A British Geological Survey © NERC & Derived in part from Source Protection Zone material- Licence from the Environment Agency © Environment Agency 2012. All rights reserved.

This document has been prepared by AECOM Limited ("AECOM") for the sole use of our Client, and in accordance with generally accepted consultancy principles, the budget for fees and the terms of reference agreed between AECOM and the Client. Any information provided by third parties and referred to herein has not been checked or verified by AECOM, unless otherwise expressly stated in the document. No third party may rely upon this document without the prior and express written agreement of AECOM.

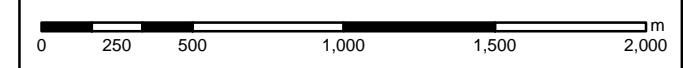
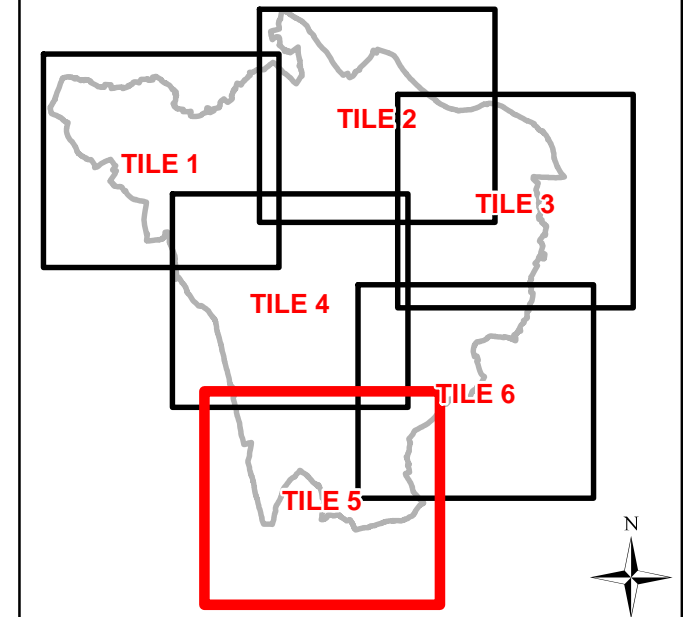


Legend

- Borough Boundary
- Main River Culvert
- Ordinary Watercourse Culvert
- Main River
- Ordinary Watercourses

SuDS Suitability

- Highly Suitable
- Probably Suitable
- Potentially Suitable for Bespoke Designs
- Unlikely to be Suitable



THE LONDON BOROUGH
Strategic Flood Risk Assessment

AECOM

Sunley House, 4 Bedford Park
Croydon, Surrey, CR0 2AP
Tel: +44 (0) 208 639 3500
www.aecom.com

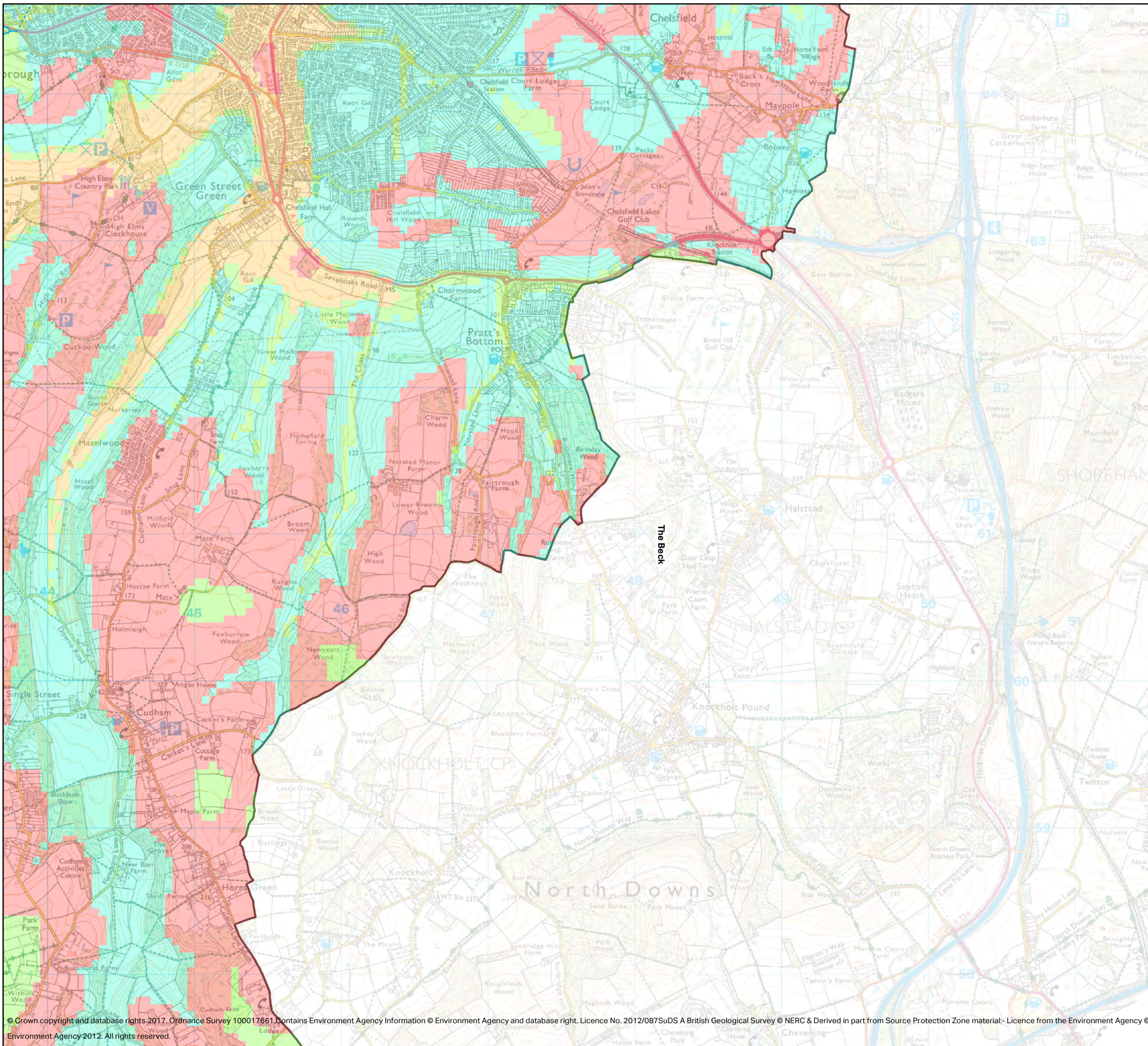
SuDS Infiltration Suitability

GIS: SB	Checked: JB	Approved: GP	Date: 06/04/2017
------------	----------------	-----------------	---------------------

Map no: 010	Tile 5	Scale: 1:25,000
-------------	--------	-----------------

© Crown copyright and database rights 2017. Ordnance Survey 100017661. Contains Environment Agency Information © Environment Agency and database right. Licence No. 2012/087SuDS A British Geological Survey © NERC & Derived in part from Source Protection Zone material: Licence from the Environment Agency © Environment Agency 2012. All rights reserved.

This document has been prepared by AECOM Limited ("AECOM") for the sole use of our Client, and in accordance with generally accepted consultancy principles, the budget for fees and the terms of reference agreed between AECOM and the Client. Any information provided by third parties and referred to herein has not been checked or verified by AECOM, unless otherwise expressly stated in the document. No third party may rely upon this document without the prior and express written agreement of AECOM.

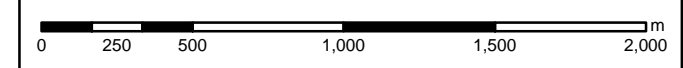
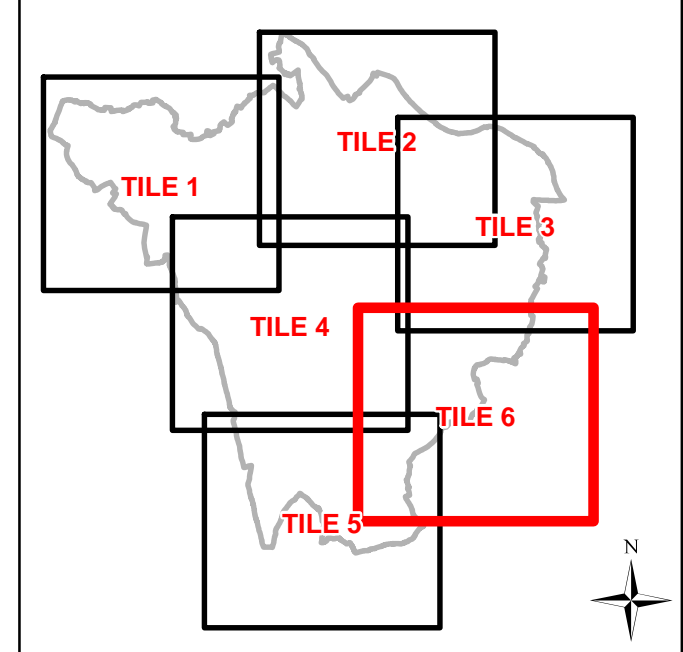


Legend

- Borough Boundary
- Main River Culvert
- Ordinary Watercourse Culvert
- Main River
- Ordinary Watercourses

SuDS Suitability

- Highly Suitable
- Probably Suitable
- Potentially Suitable for Bespoke Designs
- Unlikely to be Suitable




THE LONDON BOROUGH

Strategic Flood Risk Assessment



Sunley House, 4 Bedford Park
Croydon, Surrey, CR0 2AP
Tel: +44 (0) 208 639 3500
www.aecom.com

SuDS Infiltration Suitability

GIS: SB	Checked: JB	Approved: GP	Date: 06/04/2017
------------	----------------	-----------------	---------------------

Map no: 010	Tile 6	Scale: 1:25,000
-------------	--------	-----------------

© Crown copyright and database rights 2017. Ordnance Survey 100017661. Contains Environment Agency Information © Environment Agency and database right. Licence No. 2012/087SuDS A British Geological Survey © NERC & Derived in part from Source Protection Zone material:- Licence from the Environment Agency © Environment Agency 2012. All rights reserved.

This document has been prepared by AECOM Limited ("AECOM") for the sole use of our Client, and in accordance with generally accepted consultancy principles, the budget for fees and the terms of reference agreed between AECOM and the Client. Any information provided by third parties and referred to herein has not been checked or verified by AECOM, unless otherwise expressly stated in the document. No third party may rely upon this document without the prior and express written agreement of AECOM.