

Legend

- Borough Boundary
- Main River Culvert
- Ordinary Watercourse Culvert
- Main River
- Ordinary Watercourse

1% AEP with an Allowance for Climate Change

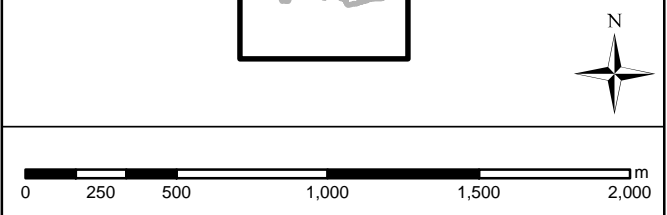
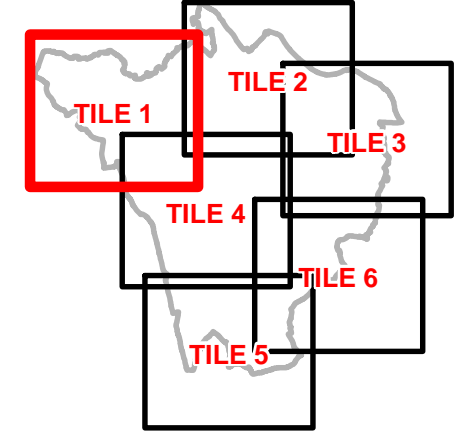
- Flood Zone 3
- 25% Increase in Peak River Flow
- 35% Increase in Peak River Flow
- 70% Increase in Peak River Flow River Cray only
- 0.1% AEP Modelled Flood Extent River Ravensbourne only

Flood Zones

- Flood Zone 3B
- Flood Zone 3
- Flood Zone 2

National Receptor Database

- Ambulance Station
- Education Facility
- Fire Station
- Gas and Electric Infrastructure
- Medical Facility
- Police Station
- Public Transport Stations



Strategic Flood Risk Assessment

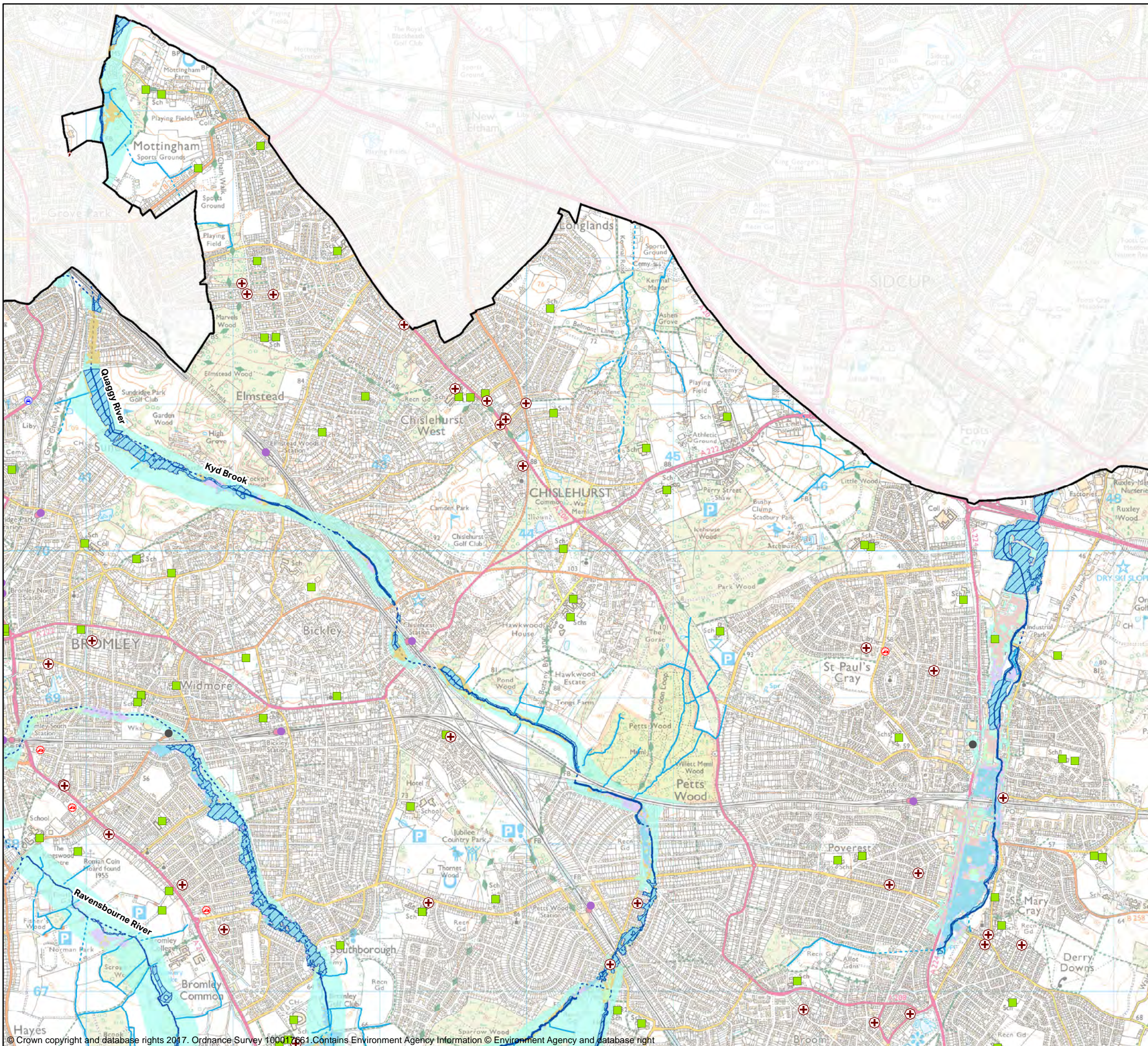
Sunley House, 4 Bedford Park
Croydon, Surrey, CR0 2AP
Tel: +44 (0) 208 639 3500
www.aecom.com

Vulnerable Sites: Risk of Flooding from Rivers and Sea with an Allowance for Climate Change

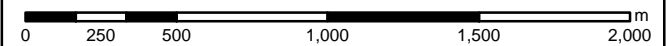
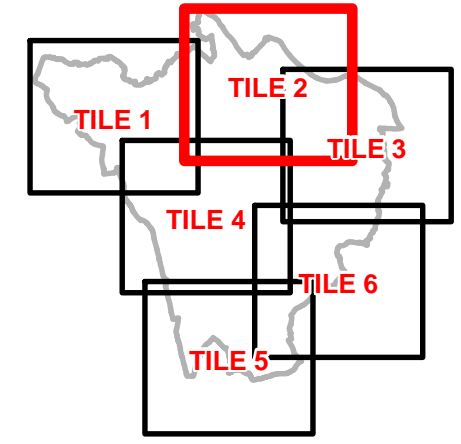
GIS: SB	Checked: BN	Approved: GP	Date: 18/05/2017
------------	----------------	-----------------	---------------------

Map no: 012a	Tile 1	Scale: 1:25,000
-----------------	--------	--------------------

This document has been prepared by AECOM Limited ("AECOM") for the sole use of our Client, and in accordance with generally accepted consultancy principles, the budget for fees and the terms of reference agreed between AECOM and the Client. Any information provided by third parties and referred to herein has not been checked or verified by AECOM, unless otherwise expressly stated in the document. No third party may rely upon this document without the prior and express written agreement of AECOM.



- Legend**
- Borough Boundary
 - Main River Culvert
 - Ordinary Watercourse Culvert
 - Main River
 - Ordinary Watercourse
- 1% AEP with an Allowance for Climate Change**
- Flood Zone 3
 - 25% Increase in Peak River Flow
 - 35% Increase in Peak River Flow
 - 70% Increase in Peak River Flow River Cray only
 - 0.1% AEP Modelled Flood Extent River Ravensbourne only
- Flood Zones**
- Flood Zone 3B
 - Flood Zone 3
 - Flood Zone 2
- National Receptor Database**
- Ambulance Station
 - Education Facility
 - Fire Station
 - Gas and Electric Infrastructure
 - Medical Facility
 - Police Station
 - Public Transport Stations



Strategic Flood Risk Assessment



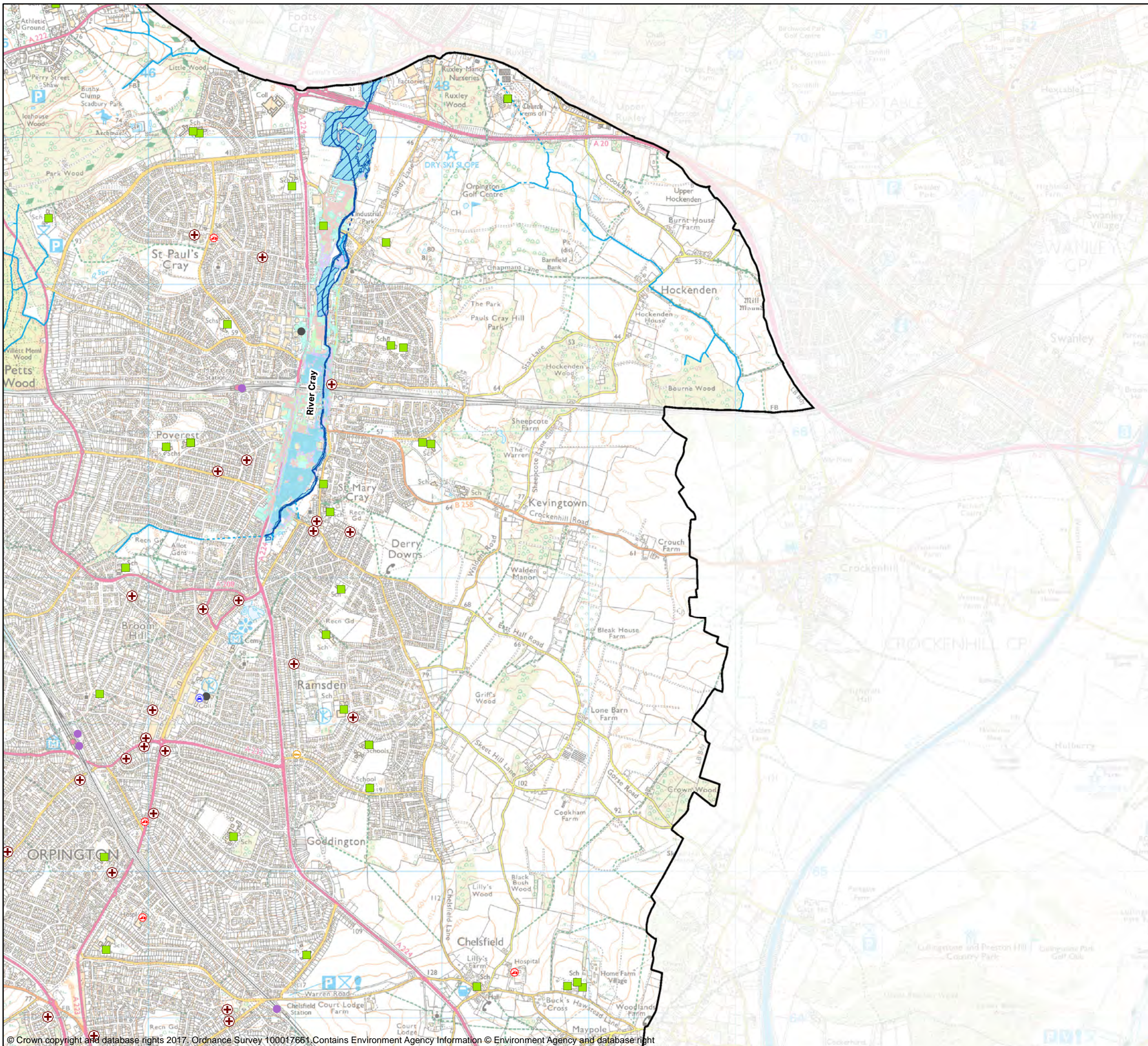
Sunley House, 4 Bedford Park
Croydon, Surrey, CR0 2AP
Tel: +44 (0) 208 639 3500
www.aecom.com

Vulnerable Sites: Risk of Flooding from Rivers and Sea with an Allowance for Climate Change

GIS: SB	Checked: BN	Approved: GP	Date: 18/05/2017
------------	----------------	-----------------	---------------------

Map no: 012a	Tile 2	Scale: 1:25,000
-----------------	--------	--------------------

This document has been prepared by AECOM Limited ("AECOM") for the sole use of our Client, and in accordance with generally accepted consultancy principles, the budget for fees and the terms of reference agreed between AECOM and the Client. Any information provided by third parties and referred to herein has not been checked or verified by AECOM, unless otherwise expressly stated in the document. No third party may rely upon this document without the prior and express written agreement of AECOM.



Legend

- Borough Boundary
- Main River Culvert
- Ordinary Watercourse Culvert
- Main River
- Ordinary Watercourse

1% AEP with an Allowance for Climate Change

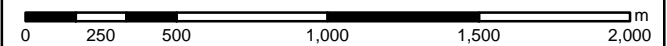
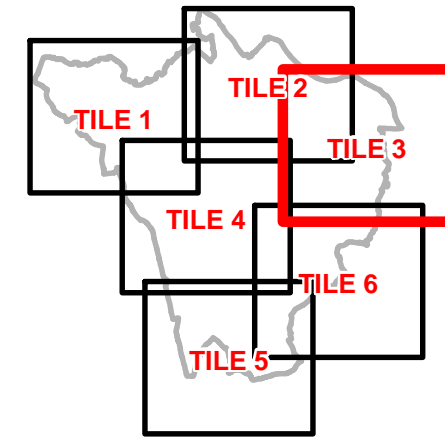
- Flood Zone 3
- 25% Increase in Peak River Flow
- 35% Increase in Peak River Flow
- 70% Increase in Peak River Flow River Cray only
- 0.1% AEP Modelled Flood Extent River Ravensbourne only

Flood Zones

- Flood Zone 3B
- Flood Zone 3
- Flood Zone 2

National Receptor Database

- Ambulance Station
- Education Facility
- Fire Station
- Gas and Electric Infrastructure
- Medical Facility
- Police Station
- Public Transport Stations



Strategic Flood Risk Assessment



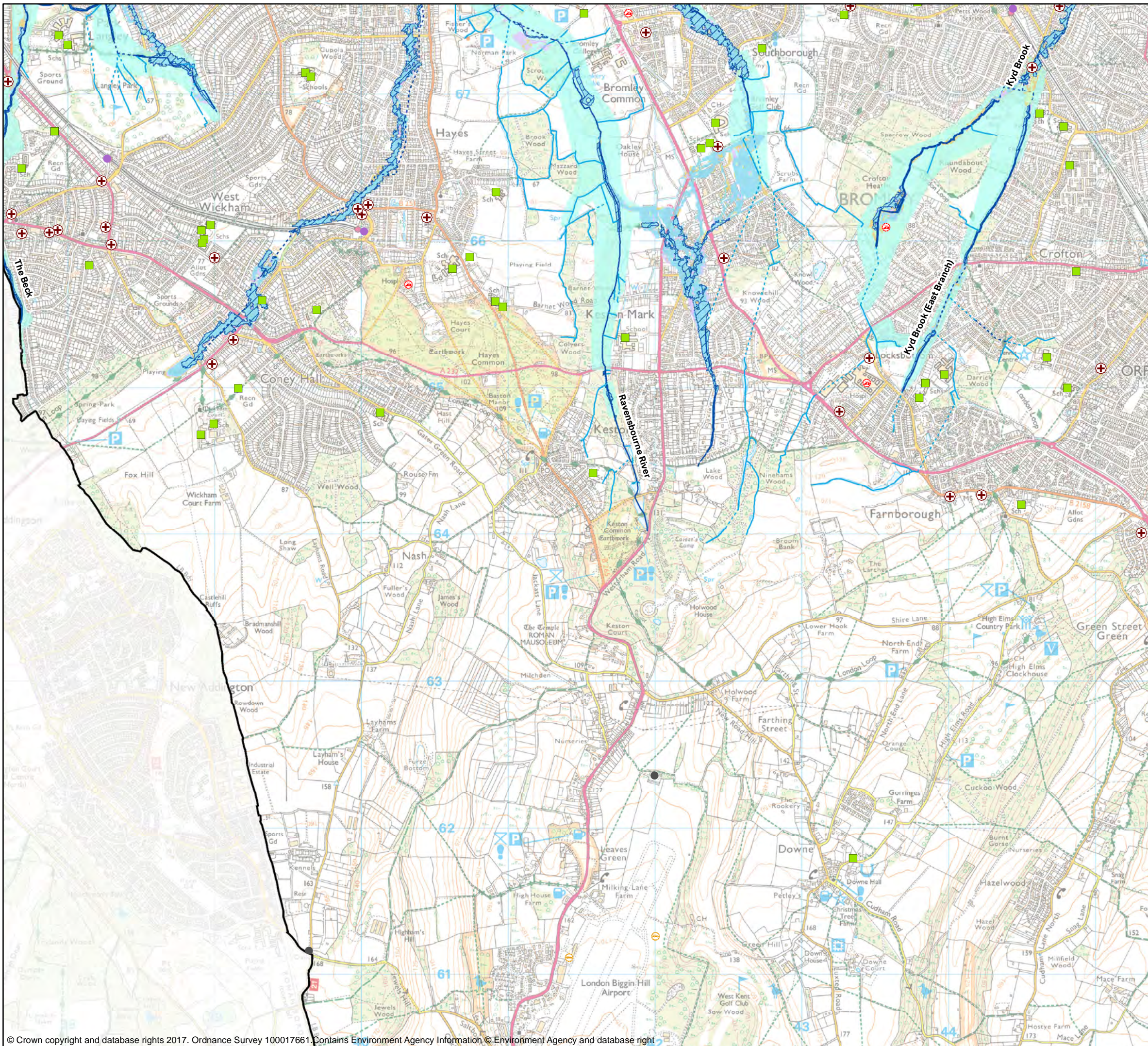
Sunley House, 4 Bedford Park
Croydon, Surrey, CR0 2AP
Tel: +44 (0) 208 639 3500
www.aecom.com

Vulnerable Sites: Risk of Flooding from Rivers and Sea with an Allowance for Climate Change

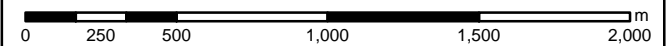
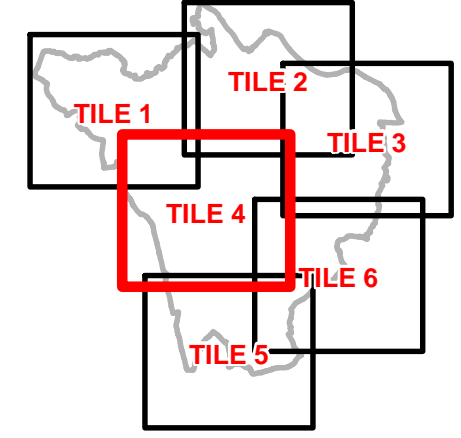
GIS: SB	Checked: BN	Approved: GP	Date: 18/05/2017
------------	----------------	-----------------	---------------------

Map no: 012a	Tile 3	Scale: 1:25,000
-----------------	--------	--------------------

This document has been prepared by AECOM Limited ("AECOM") for the sole use of our Client, and in accordance with generally accepted consultancy principles, the budget for fees and the terms of reference agreed between AECOM and the Client. Any information provided by third parties and referred to herein has not been checked or verified by AECOM, unless otherwise expressly stated in the document. No third party may rely upon this document without the prior and express written agreement of AECOM.



- Legend**
- Borough Boundary
 - Main River Culvert
 - Ordinary Watercourse Culvert
 - Main River
 - Ordinary Watercourse
- 1% AEP with an Allowance for Climate Change**
- Flood Zone 3
 - 25% Increase in Peak River Flow
 - 35% Increase in Peak River Flow
 - 70% Increase in Peak River Flow River Cray only
 - 0.1% AEP Modelled Flood Extent River Ravensbourne only
- Flood Zones**
- Flood Zone 3B
 - Flood Zone 3
 - Flood Zone 2
- National Receptor Database**
- Ambulance Station
 - Education Facility
 - Fire Station
 - Gas and Electric Infrastructure
 - Medical Facility
 - Police Station
 - Public Transport Stations



Strategic Flood Risk Assessment

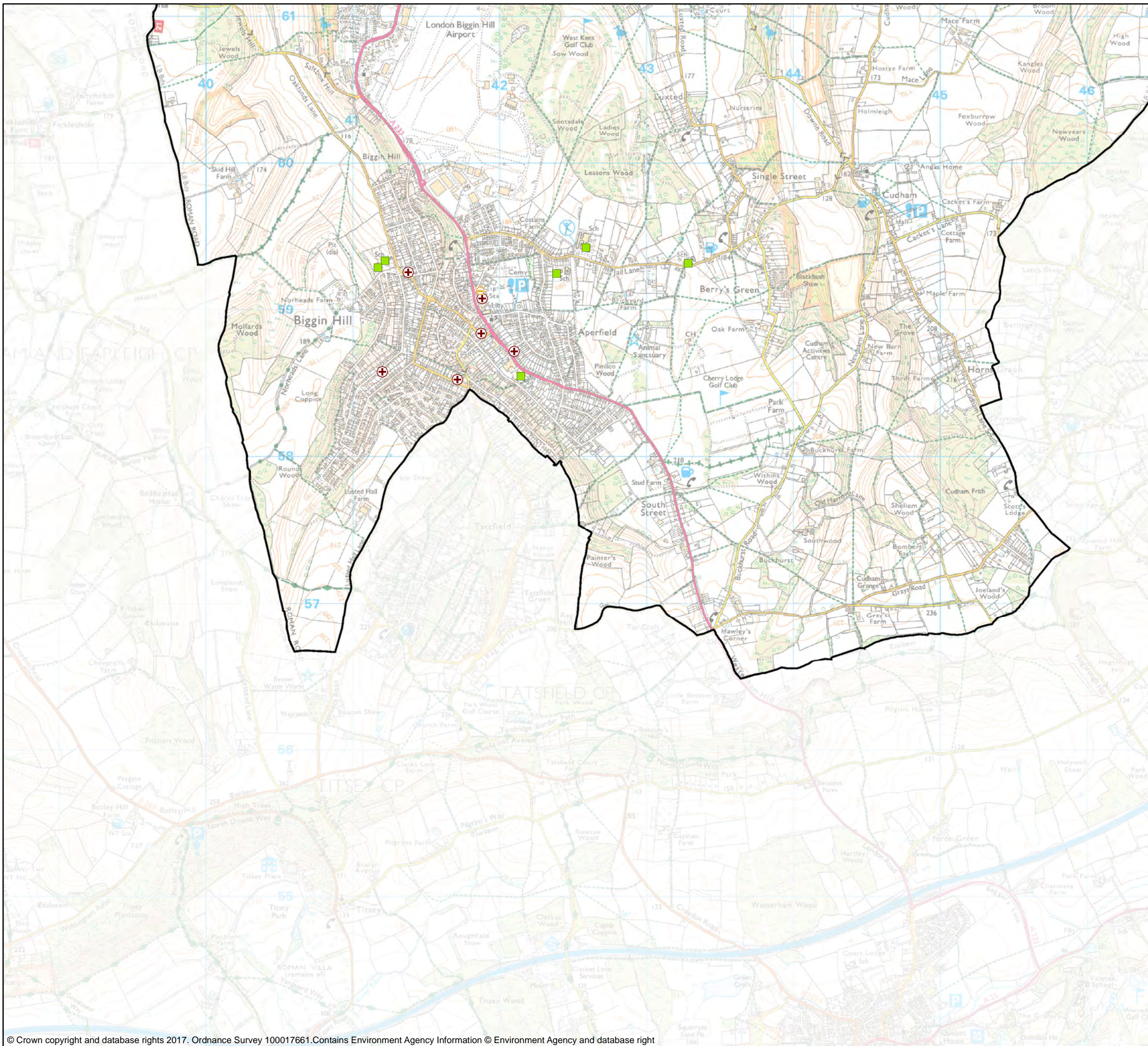
AECOM	Sunley House, 4 Bedford Park Croydon, Surrey, CR0 2AP
	Tel: +44 (0) 208 639 3500 www.aecom.com

Vulnerable Sites: Risk of Flooding from Rivers and Sea with an Allowance for Climate Change

GIS: SB	Checked: BN	Approved: GP	Date: 18/05/2017
------------	----------------	-----------------	---------------------

Map no: 012a	Tile 4	Scale: 1:25,000
-----------------	--------	--------------------

This document has been prepared by AECOM Limited ("AECOM") for the sole use of our Client, and in accordance with generally accepted consultancy principles, the budget for fees and the terms of reference agreed between AECOM and the Client. Any information provided by third parties and referred to herein has not been checked or verified by AECOM, unless otherwise expressly stated in the document. No third party may rely upon this document without the prior and express written agreement of AECOM.



Legend

- Borough Boundary
- Main River Culvert
- Ordinary Watercourse Culvert
- Main River
- Ordinary Watercourse

1% AEP with an Allowance for Climate Change

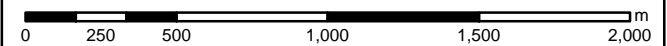
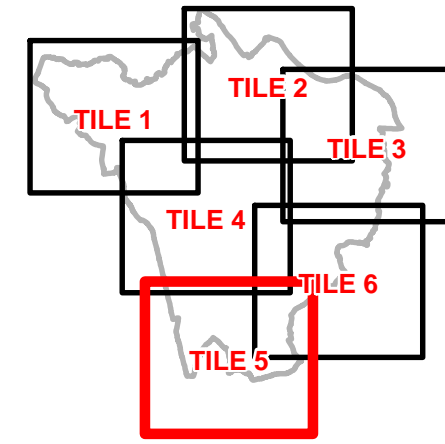
- Flood Zone 3
- 25% Increase in Peak River Flow
- 35% Increase in Peak River Flow
- 70% Increase in Peak River Flow River Cray only
- 0.1% AEP Modelled Flood Extent River Ravensbourne only

Flood Zones

- Flood Zone 3B
- Flood Zone 3
- Flood Zone 2

National Receptor Database

- Ambulance Station
- Education Facility
- Fire Station
- Gas and Electric Infrastructure
- Medical Facility
- Police Station
- Public Transport Stations



Strategic Flood Risk Assessment



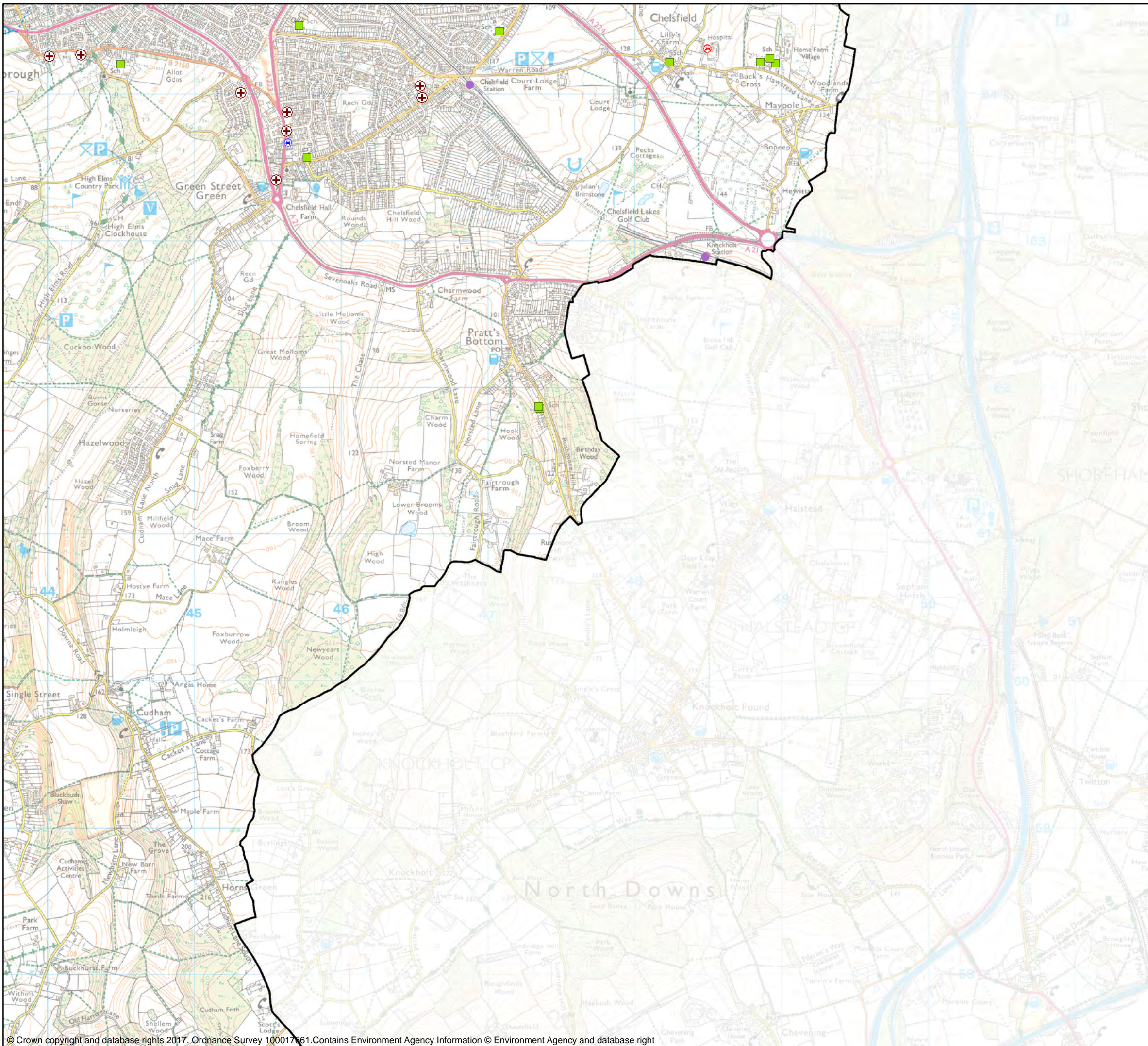
Sunley House, 4 Bedford Park
Croydon, Surrey, CR0 2AP
Tel: +44 (0) 208 639 3500
www.aecom.com

Vulnerable Sites: Risk of Flooding from Rivers and Sea with an Allowance for Climate Change

GIS: SB	Checked: BN	Approved: GP	Date: 18/05/2017
------------	----------------	-----------------	---------------------

Map no: 012a	Tile 5	Scale: 1:25,000
-----------------	--------	--------------------

This document has been prepared by AECOM Limited ('AECOM') for the sole use of our Client, and in accordance with generally accepted consultancy principles, the budget for fees and the terms of reference agreed between AECOM and the Client. Any information provided by third parties and referred to herein has not been checked or verified by AECOM, unless otherwise expressly stated in the document. No third party may rely upon this document without the prior and express written agreement of AECOM.



Legend

- Borough Boundary
- Main River Culvert
- Ordinary Watercourse Culvert
- Main River
- Ordinary Watercourse

1% AEP with an Allowance for Climate Change

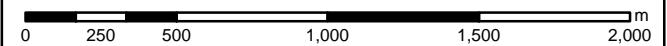
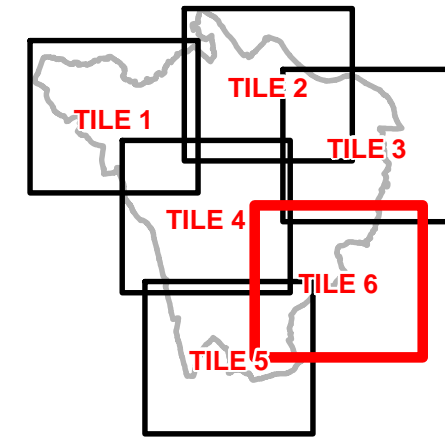
- Flood Zone 3
- 25% Increase in Peak River Flow
- 35% Increase in Peak River Flow
- 70% Increase in Peak River Flow River Cray only
- 0.1% AEP Modelled Flood Extent River Ravensbourne only

Flood Zones

- Flood Zone 3B
- Flood Zone 3
- Flood Zone 2

National Receptor Database

- Ambulance Station
- Education Facility
- Fire Station
- Gas and Electric Infrastructure
- Medical Facility
- Police Station
- Public Transport Stations



Strategic Flood Risk Assessment



Sunley House, 4 Bedford Park
Croydon, Surrey, CR0 2AP
Tel: +44 (0) 208 639 3500
www.aecom.com

Vulnerable Sites: Risk of Flooding from Rivers and Sea with an Allowance for Climate Change

GIS: SB	Checked: BN	Approved: GP	Date: 18/05/2017
------------	----------------	-----------------	---------------------

Map no: 012a	Tile 6	Scale: 1:25,000
-----------------	--------	--------------------

This document has been prepared by AECOM Limited ("AECOM") for the sole use of our Client, and in accordance with generally accepted consultancy principles, the budget for fees and the terms of reference agreed between AECOM and the Client. Any information provided by third parties and referred to herein has not been checked or verified by AECOM, unless otherwise expressly stated in the document. No third party may rely upon this document without the prior and express written agreement of AECOM.