

# Engagement Matters

## January - April 2023

Education, Health and Care Services are working together to improve our support across Bromley for children and young people who have Special Educational Needs and/or Disabilities (SEND) and their families.



### Events centred around current information

- Pre-school engagement event held at **Blenheim Children's Centre** for parents/carers to talk to and receive advice from speech and language therapists.
- Petts Wood Playgroup's** parents/carers coffee morning. Information shared regarding the **Local Offer**, **B-Hive**, and the new **Bromley parent carer forum**.
- CASPA Tots** An event was held for parents/carers to share information regarding the **Bromley Local Offer**, the **B-Hive** therapies website and the new **Bromley Parent Carer Forum**.

### Dedicated Health Visitor

We have a newly appointed **Health Visitor** for **SEND**, supplying information in children's health service for ages 0-4yrs, learn more: [www.bromley0to19.co.uk/0-4-years](http://www.bromley0to19.co.uk/0-4-years)



### Annual Review

Continue to offer **Annual Review** information sessions at Year 9 each term to help parents/carers to understand the Annual Review process and how they and their child can get involved, with the focus on **Preparing for Adulthood (PFA)**.

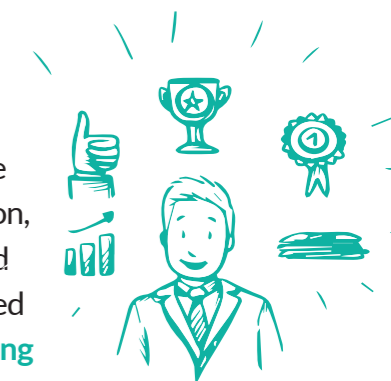


### ARFID and Autism

Shared concerns regarding **ARFID** and the impact it has on children, young people, and their families, at the April **All-Age Autism Board** so that the difficulties faced by families are acknowledged at a strategic level. The children and young person's voice is directly influencing positive change to service provision, improving pathway's and potentially how we commission specific pathways.

### Opportunities for young people with SEND

Engagement with young people in school to share current opportunities available in further education, supported internships or apprenticeships and paid employment. The young person's voice will be used to share views and ideas via the **Children and Young People's area** on the **Local Offer**.



### The Embracing Diversity Project

The **Embracing Diversity Project** would like to invite parents/carers from a wider range of cultures/ethnicities to better represent the diverse population and demographic of the local area.



### Targeted training and support for Emotional Based School Avoidance

Ongoing training and support offered to staff in schools, colleges and the Education and Welfare officers relating to **Emotional Based School Avoidance**, as well as **Emotional Based School Avoidance** webinars offered by **Bromley Y**.

### Preparing for Adulthood and employment pathways

Events held across a variety of Bromley special schools to discuss **Preparing for Adulthood**, post 16 options, Supported Internships and employment opportunities for young people with **SEND** in Bromley.



### Young people's views

Continued development of the young people's area on the **Local Offer** to encourage ownership, independence regarding the information they wish to receive and young people's views and wishes.



### Teams Meeting for young people

Young people's **Teams** meeting held to hear to what is working/not working in Bromley. This will be fed back to **Bromley All Age Autism Board**.



Find Out More [www.bromley.gov.uk/LocalOffer](http://www.bromley.gov.uk/LocalOffer)

### EHC Needs Eligibility support

**EHC Needs Eligibility Criteria guide** to support parents'/carers' understanding of the levels of support offered in schools for children and young people with SEND. Engagement events for parents/carers will continue to share resources, information and updates.

