



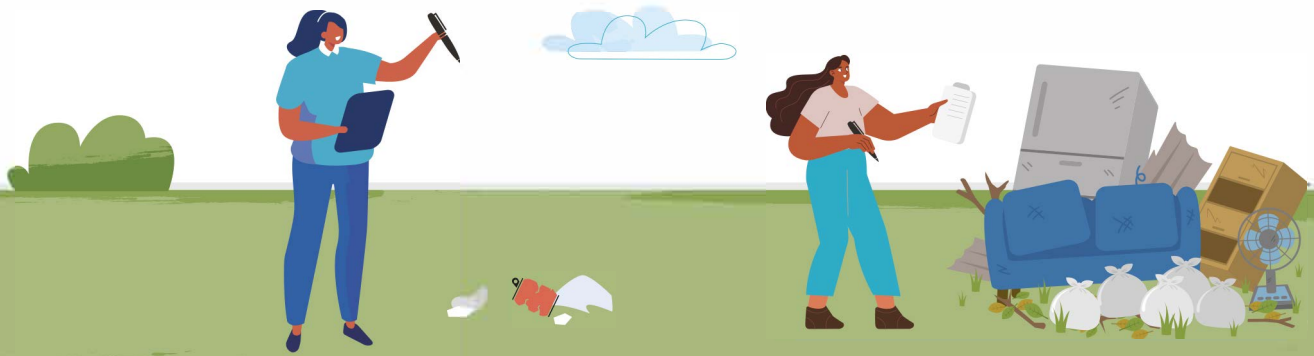
# NEIGHBOURHOOD CHECKLIST

Using this checklist, take a walk around your neighbourhood and make a note of anything you spot that makes it look untidy, or anything that looks dangerous and needs attention; then report what you find to Bromley Council at: [www.bromley.gov.uk/report](http://www.bromley.gov.uk/report)

*\*Try to be as descriptive as possible so we can easily find the problem such as stating which road and house number it is outside of; if it is at a junction of two roads; or if it is next to a distinctive landmark if there are no nearby buildings.*



What you spot?	Notes	Where it is*
<b>Dead or dangerous tree</b>	Inspect any street trees to check that there are no dead or broken branches that may snap off and damage a vehicle or injure someone. Make a note of any trees that have excessive shoots growing from the base of the trunk that need to be removed (basal growth).	
<b>Dog fouling</b>	It is an offence for people not to clear up after their dogs. Let us know if you spot an area that has lots of dog fouling to see if we can identify who is doing this and stop them.	
<b>Empty tree pit</b>	Trees can reduce air pollution, quieten noise and improve the appearance of a neighbourhood. Let us know if you see an empty tree pit.	
<b>Fly-posting</b>	We remove posters stuck or tied to things like lamp posts or railings advertising events, services or products unless it is somewhere like a community noticeboard in a park where permission has been given for them to be displayed.	



What you spot?	Notes	Where it is*
<b>Fly-tipping</b>	Fly-tipping is the illegal dumping of waste or items. It can be anything from a bag full of rubbish to a large object such as a fridge or mattress, or a pile of these things. Items should not even be left on the pavement outside a closed charity shop where they can trip someone up, or by the side of a recycling container if it is full.	
<b>Graffiti</b>	Graffiti can be gang related or offensive. It can make a place look untidy and unsafe, and if it is not removed quickly can encourage more to be added around it.	
<b>Vegetation that is growing over the pavement and causing an obstruction</b>	It is important that we keep pavements clear for people who can't see very well, and people pushing prams or in a wheelchair or mobility scooter.	
<b>Weeds growing down the side of a pavement or road</b>	Our service provider removes weeds but let us know if you find a road where there are lots of weeds growing that make the pavement or side of the road look untidy.	
<b>Anything else you see that looks dangerous or makes an area look untidy</b>		

