

Windows behind Salvation army building to be opaque for privacy

Hollaway

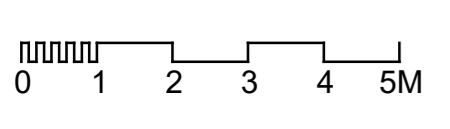
London | 10a Acton Street | London | WC1X 9SD
 T +44 (0) 20 7056 9423 | E london@hollawaystudio.co.uk | W www.hollawaystudio.co.uk
 Kent | The Tramway Stables | Ramport Road | Hythe | Kent | CT21 5BG
 T +44 (0) 1303 240 515 | E kent@hollawaystudio.co.uk | W www.hollawaystudio.co.uk

Project | Ringers Road Bromley
Client | The Substantia Group
Title | Block A: Proposed Elevation B-B'
Status | PLANNING

Scale | A1 | 1:100 **Date** | 20.11.20 **Drawn** | GG **Chk'd** | LC

Project Number | 18.085 **Drawing Number** | 200.21 **Revision** | R2
Bldg Number |

R2 Updates for Planning Submission 27.10.2021



Refer to drawing 18.085.500.00 for Proposed Material Palette