

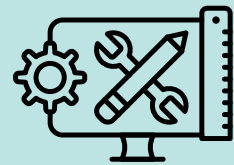
Engagement Matters

July to September 2023

Education, Health and Care Services are working together to improve our support across Bromley for children and young people who have Special Educational Needs and/or Disabilities (SEND) and their families.



Supporting children to attend school

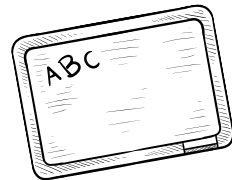


We developed an **Emotionally Based School Avoidance (EBSA) Toolkit and training resources** for education settings to support the prevention of emotionally based school avoidance and to implement effective interventions for individual pupils.

We produced a **Reasonable Adjustment in Education Settings guide** to set out the steps that education settings should take to remove barriers to learning.



Supporting parents of under 5's



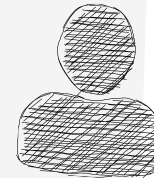
We held **Early Years Parent Information events** at Community Vision Children and Family Centre (CFC) in Penge and Castlecombe CFC in Mottingham.

Supporting teenagers



We held an information session for parents and carers regarding **Supported Internships**.

We are taking part in the **national Internships Work Project** to support more young people to have greater choice and control over their future.



We spoke with teenagers to continue shaping the **Bromley Local Offer for Young People**.

We visited a number of schools and community settings to speak with teenagers about their **hopes for the future and the outcomes** that are working towards to inform our SEND Outcomes work.



Enhancing local health services

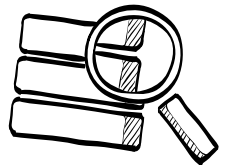
We supported parents to meet with the new specialist nurse-led service for children who have **bladder and bowel conditions**.



Improving how we identify needs

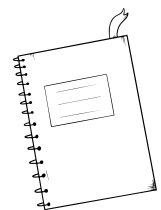
We began a project to undertake a new **needs assessment** including:

- those with mental health and wellbeing challenges
- those with Autism Spectrum Condition (ASC)
- adults with learning disabilities



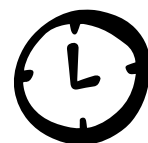
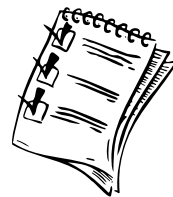
We started a review of the **Autism diagnostic and support pathway**.

Meeting our statutory deadlines



We have commissioned a writing service to support with **drafting, amending and finalising EHC Plans**.

We are reviewing our **Annual Review guidance** to strengthen the process that schools and settings follow.



We are tracking the **timeliness of professional advice** on a weekly basis.

Making our information accessible to all



We have printed information leaflets for the Local Offer and b-HIVE websites in the **top spoken languages** in Bromley.

We are supporting the development of the **Bromley Parent Carer Forum**.



We reviewed the Short Breaks Statement with children and their families to ensure that it provides information about the **Short Breaks activities** and how to access them.

