

## Official – Sensitive

# Airborne data portfolio for Land between Bournewood Sand and Gravel Ltd. and Hockenden Lane, Swanley

<b>Author</b>	Dr Kyle Brown
<b>Version</b>	Final 1.0
<b>Issued Date</b>	26 June 2023

*Environment Agency All Rights Reserved*

*This document, which is supplied in confidence, together with its contents is the copyright property of The Environment Agency. Neither the whole, any part nor extract may be reproduced, or transmitted, in any form or by any means, electronic, mechanical, photocopying, recording or otherwise, or stored in any retrieval system of any nature, nor shall it be used for any purposes other than those for which written permission was given at the time of release, except to the extent, and for the purposes, specifically approved in writing by The Environment Agency.*

## 1 Introduction

This image portfolio provides airborne imagery for Land between Bournewood Sand and Gravel Ltd. and Hockenden Lane, Swanley. The aerial data were acquired by Environment Agency Geomatics and external providers. This document is designed to be viewed either as a PDF or printed on high-quality A3 paper by a high-quality printer.

The images in this report include LIDAR and aerial photography. Aerial LIDAR instruments use laser pulses to measure the distance between an aircraft and the ground surface. As the aircraft flies over the survey area a series of laser pulses are fired at the ground. In conjunction with very high accuracy navigation data, the laser pulses are used to build up an accurate elevation dataset of the ground below the aircraft, with spacings between the elevation measurements, or the resolution, of between 0.25 m and 2 m. Though the individual points of the LIDAR survey are slightly less accurate than a ground-based GPS survey, LIDAR instruments provide much more detail, collecting one million elevation measurements every 2 to 30 seconds.

## 2 Datasets

The datasets used in this report are described in Table 1 and are shown in Figure 1 to Figure 10.

Figure 1 to Figure 6 cover the same extent of the east area of the site. Figure 7 to Figure 10 cover the same extent of the west area of the site.

**Table 1** Data used for Land between Bournewood Sand and Gravel Ltd. and Hockenden Lane, Swanley in this report. The three APGB aerial photography datasets only cover part of the site.

Data type	Resolution (m)	Date acquired
APGB aerial photography*	0.125	21 October 2018
LIDAR	0.5	22 December 2018
APGB aerial photography**	0.125	29 June 2019
APGB aerial photography*	0.125	31 May 2021
LIDAR	0.5	6 January 2022
Aerial photography	0.1	6 January 2022

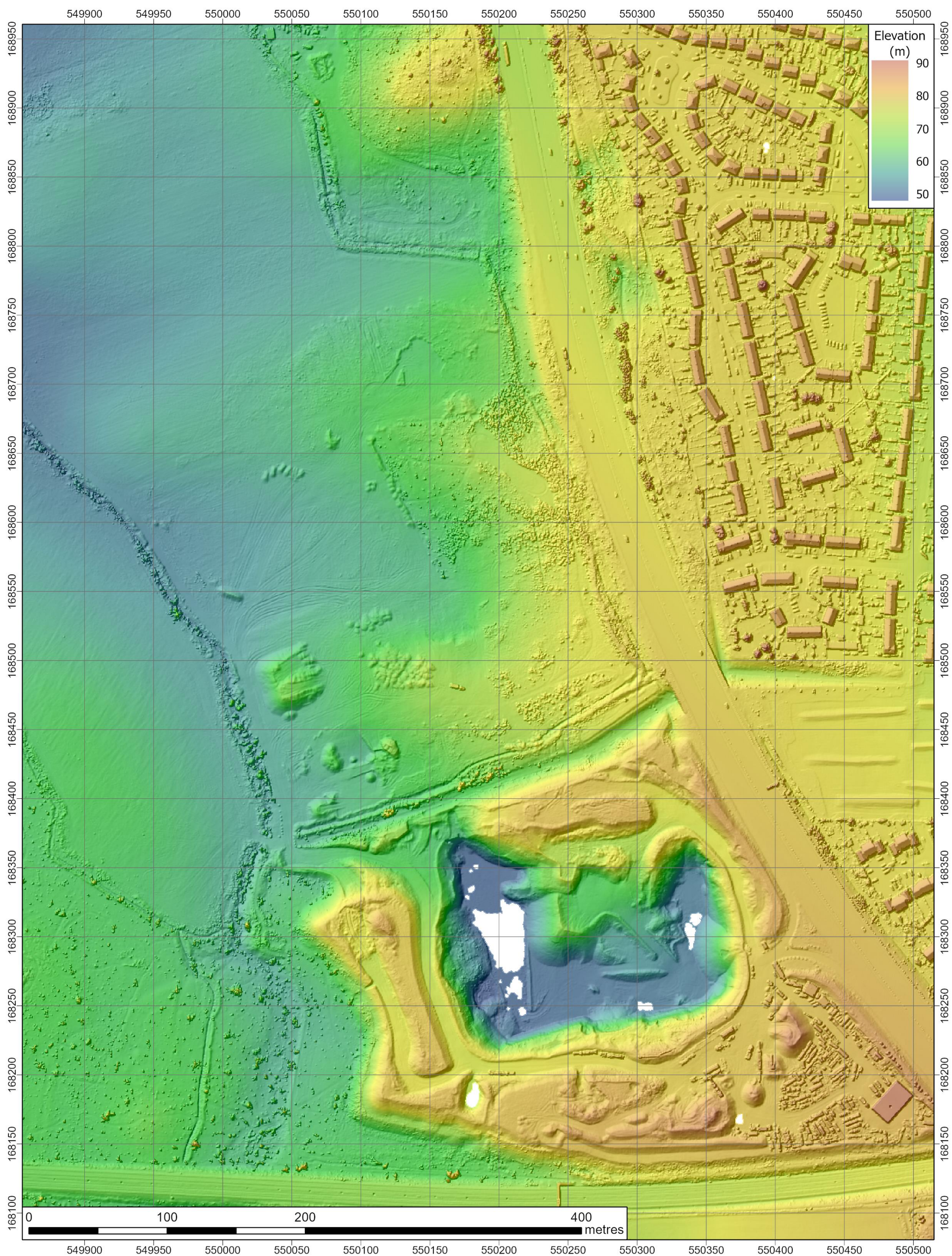
APGB= Aerial Photography Great Britain

\* data only available for eastern side of site

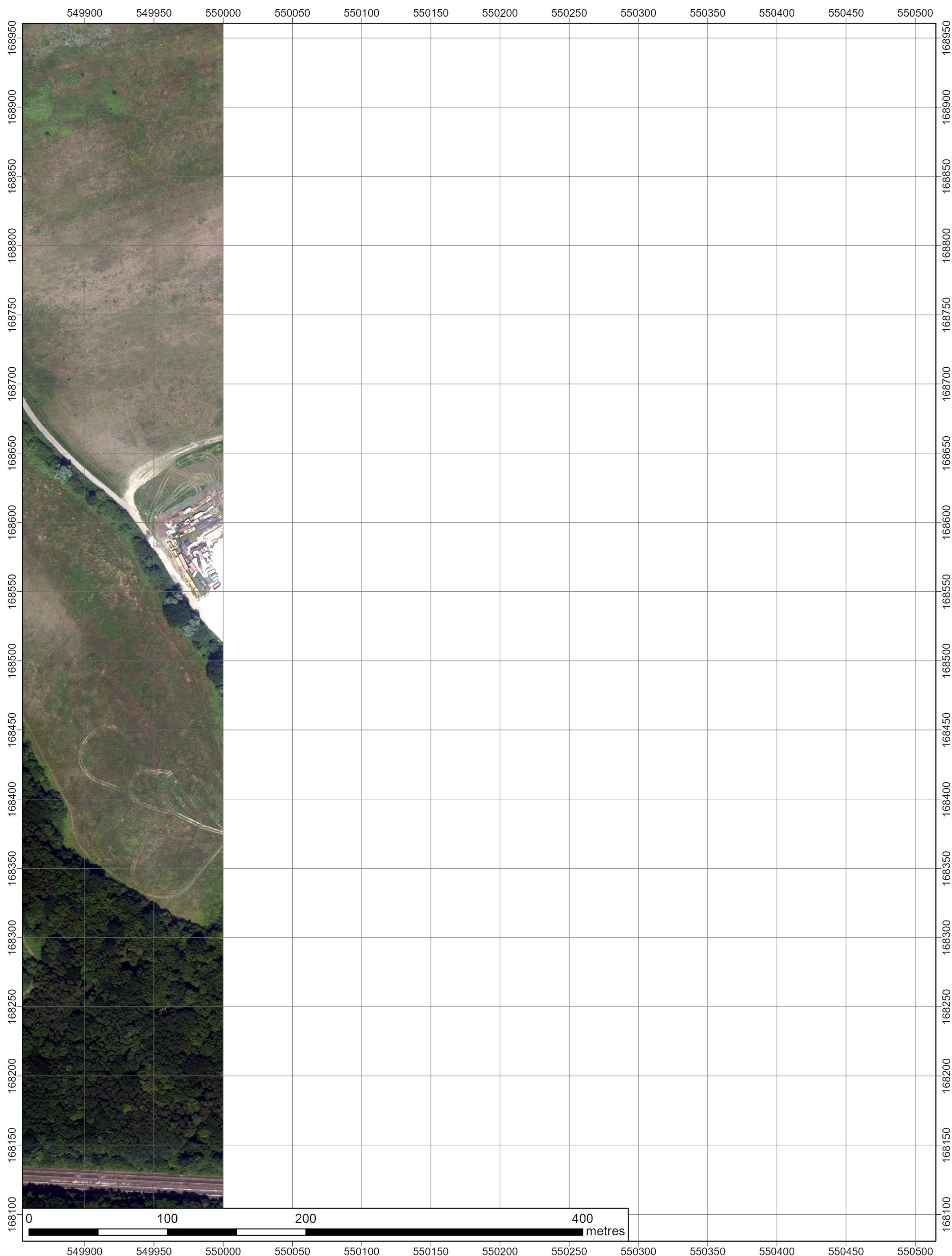
\*\* data only available for western side of site



**Figure 1** APGB aerial photography acquired on 21 October 2018 for Land between Bournewood Sand and Gravel Ltd. and Hockenden Lane, Swanley. Image covers the east side of the site © Bluesky International/Getmapping PLC.



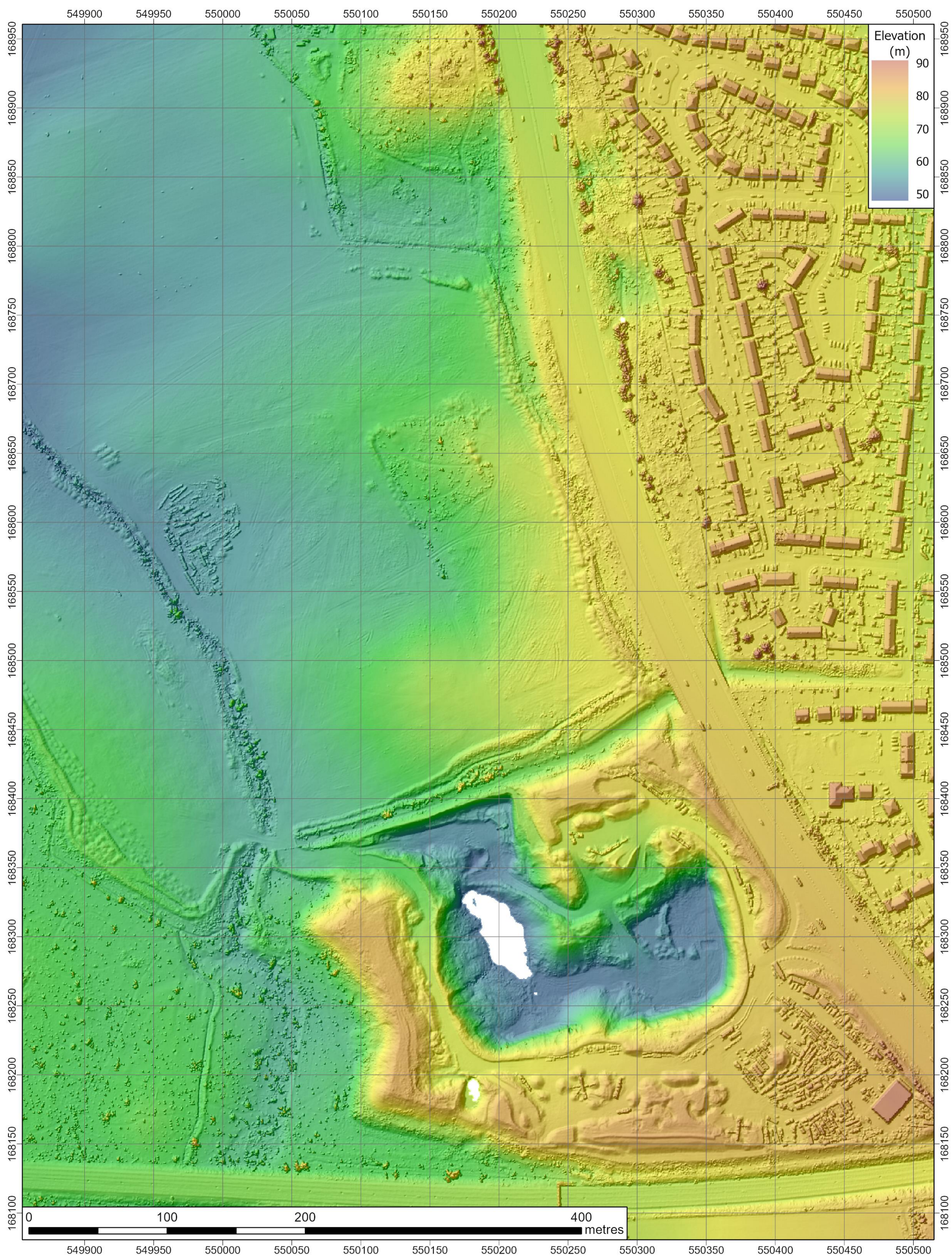
**Figure 2** LIDAR elevation data acquired on 22 December 2018 for Land between Bournewood Sand and Gravel Ltd. and Hockenden Lane, Swanley. Image covers the east side of the site



**Figure 3** APGB aerial photography acquired on 29 June 2019 for Land between Bournewood Sand and Gravel Ltd. and Hockenden Lane, Swanley. Image covers the east side of the site © Bluesky International/Getmapping PLC.



**Figure 4** APGB aerial photography acquired on 31 May 2021 for Land between Bournemouth Sand and Gravel Ltd. and Hockenden Lane, Swanley. Image covers the east side of the site © Bluesky International/Getmapping PLC.

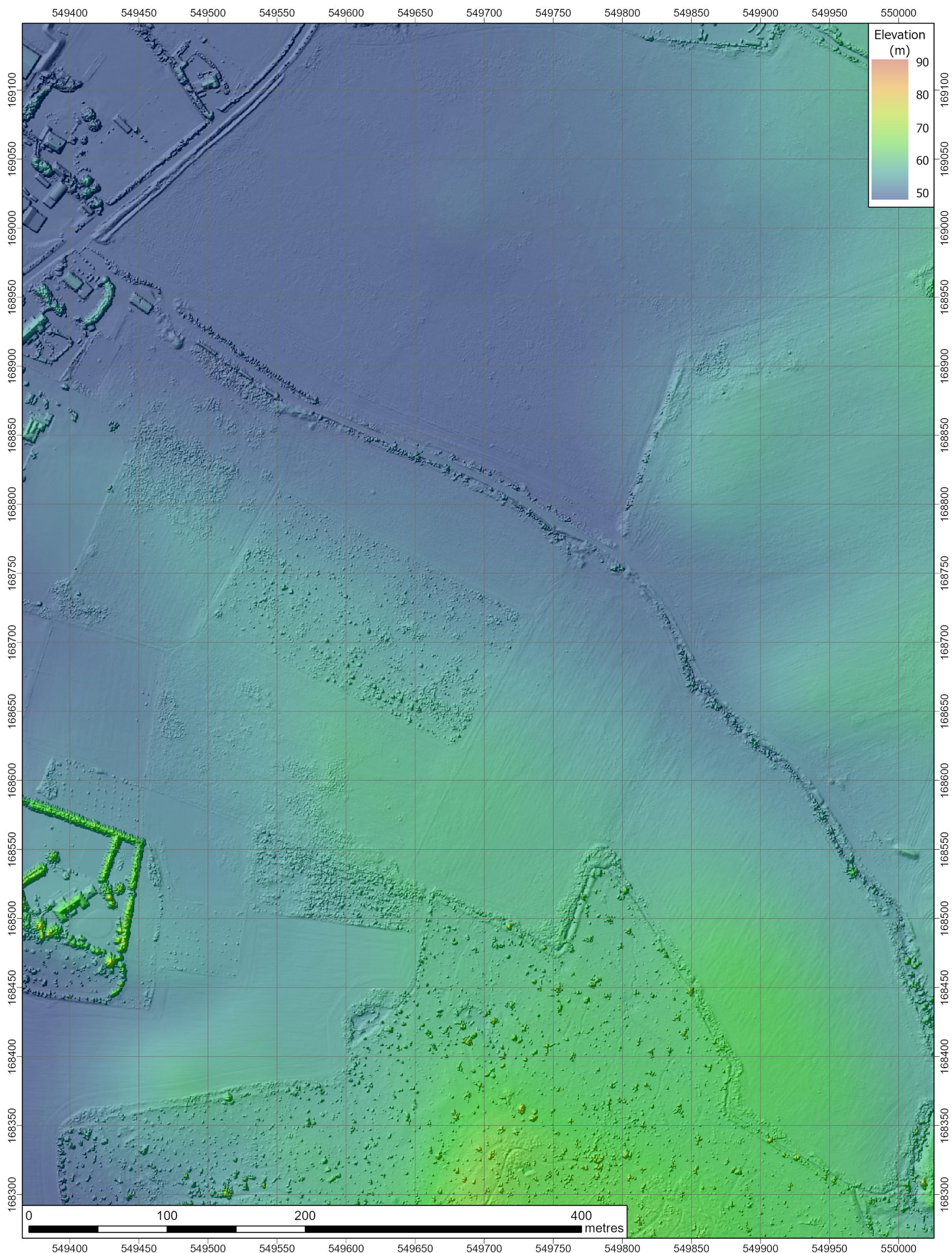


**Figure 5** LIDAR elevation data acquired on 6 January 2022 for Land between Bournewood Sand and Gravel Ltd. and Hockenden Lane, Swanley. Image covers the east side of the site



**Figure 6** Aerial photography acquired on 6 January 2022 for Land between Bournewood Sand and Gravel Ltd. and Hockenden Lane, Swanley. Image covers the east side of the site

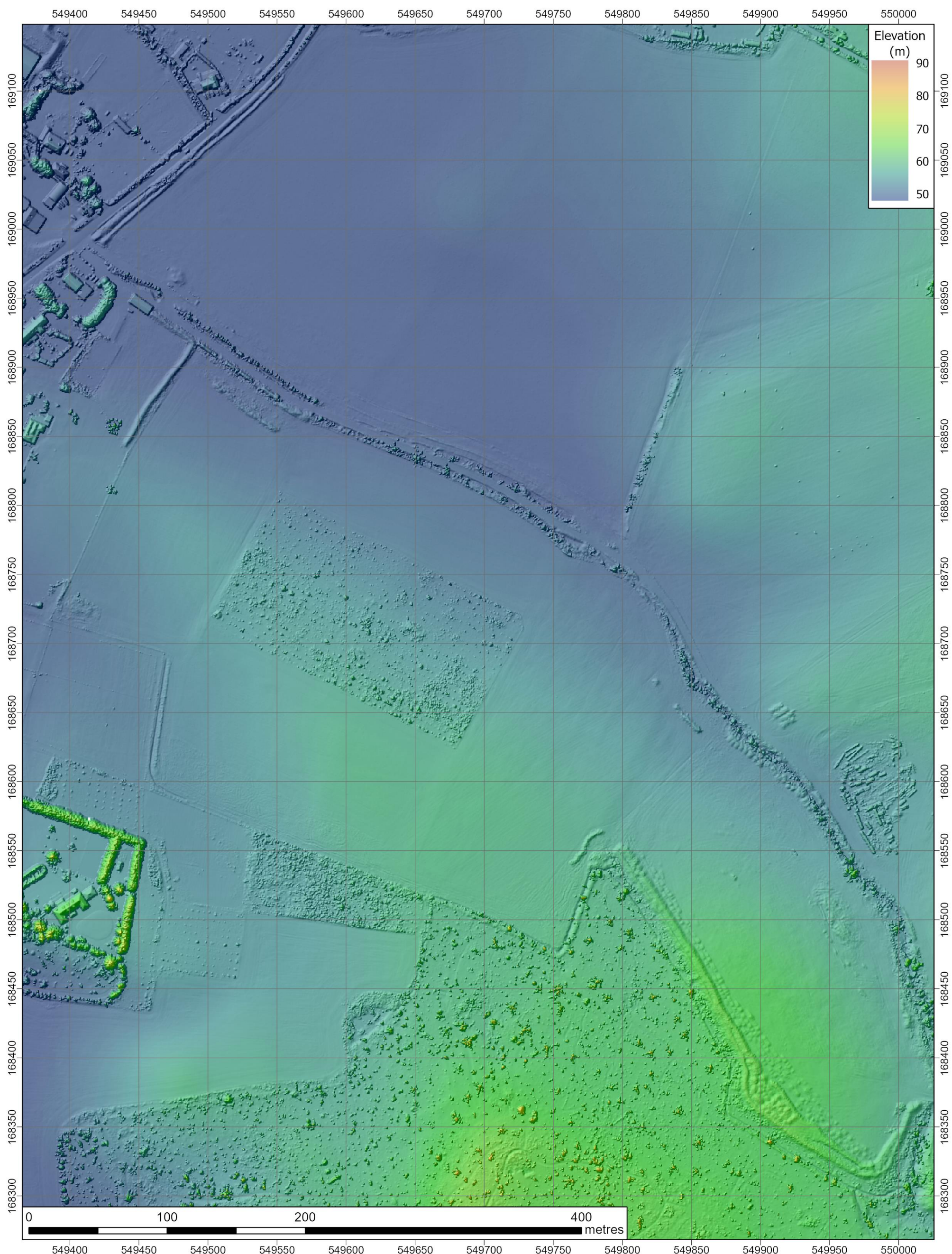




**Figure 7 LIDAR elevation data acquired on 22 December 2018 for Land between Bournewood Sand and Gravel Ltd. and Hockenden Lane, Swanley. Image covers the west side of the site**



**Figure 8** APGB aerial photography acquired on 29 June 2019 for Land between Bournemouth Sand and Gravel Ltd. and Hockenden Lane, Swanley. Image covers the west side of the site © Bluesky International/Getmapping PLC.



**Figure 9** LIDAR elevation data acquired on 6 January 2022 for Land between Bournewood Sand and Gravel Ltd. and Hockenden Lane, Swanley. Image covers the west side of the site



**Figure 10** Aerial photography acquired on 6 January 2022 for Land between Bournewood Sand and Gravel Ltd. and Hockenden Lane, Swanley. Image covers the west side of the site