

Engagement Matters

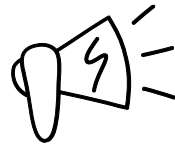
October to December 2023

Education, Health and Care Services are working together to improve our support across Bromley for children and young people who have Special Educational Needs and/or Disabilities (SEND) and their families.



We held a month-long celebration of SEND!

Raising awareness and promotion



We meet with **parents at local primary schools to raise awareness** of the Local Offer, b-HIVE, EHC Needs Assessment eligibility and the Bromley Parent Carer Forum being established.



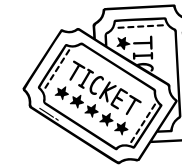
We hosted **information stations** in our Children and Families Centres and a **marketplace event** in central Bromley where parent and carers could meet professionals.

We held a focus group with parents and reps to inform the **Short Breaks Offer and statement** and to inform future commissioning priorities and next steps.



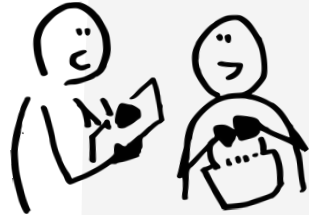
Celebrating our young people

We hosted an **Art Exhibition** in the Pavilion so children can celebrate their friendships, diversity, difference and hopes for the future by using their many artistic talents.



We hosted a **SEND Network Champion event** which is open to all professionals working with children and young people with SEND in the borough and parent and carers.

Understanding the lived experience



We attended the Young Persons weekly meet up to hear **lived experiences of their Autism diagnosis**.

We met with **parents to discuss their experience** of the Autism diagnosis process.

We hosted a **virtual Question Time** with members of the student council at the Glebe Special School.



We participated in the planning of **Project ME** for parent/carers from Asian, Black and other ethnic heritages to inform and empower parent carers who may experience isolation and stigma.

Supporting teenagers



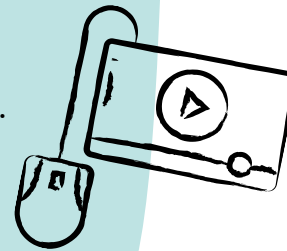
We attended a transition event at Marjorie McClure to provide information, advice, and support for young people with SEND as they **transition to adulthood**.

We developed an **Annual Review training offer for schools** in setting outcomes linked to preparing for adulthood so that PFA Outcomes are considered at all age phases.

We **delivered a webinar to Post 16 and Career Leads** on Post 16 Education and Training options.

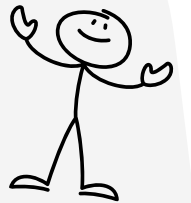


We spoke with teenagers to continue shaping the **Bromley Local Offer for Young People**.



Supporting teens to find employment

We established a **dedicated post to improve the pathways to employment** for young people with SEND, including a local Supported Internship offer.



We **updated the Local Offer information**, including:

- Employment for Young People with SEND
- Help to find a job
- Employment Rights



We continue to develop our local **Supported Internship offer** and are working with colleagues in our Human Resource team to develop a Supported Internship programme in the Council.

We launched a **brand-new employment and skills centre** at London South East Colleges' Orpington Campus to support young people to gain employment.