

Engagement Matters

January to March 2024

Education, Health and Care Services are working together to improve our support across Bromley for children and young people who have Special Educational Needs and/or Disabilities (SEND) and their families.



Improving information

We established an **Engagement and Communications workstream** which reports to the SEND Governance Board to led on the co-production of a communication strategy.

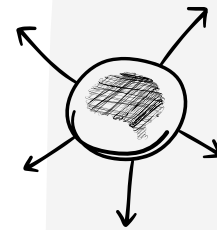


We held **Local Offer focus groups** with parent and carers to seek parental views on the next stage of the LO development.

We are working with our parent engagement partners to **improve our information sharing and communication processes** to address the concerns raised.



The right support at the right time



We undertook a **multi-agency audit of EHC Plans with a primary need of Social Emotional Mental Health (SEMH)** which identified a number of improvements schools complete as part of the evidence required to support the EHC Needs Assessment referral using the Emotional Based School Avoidance (EBSA) toolkit.

We held a monthly **Engagement Matters Reference Group** with parent and carers community and the voluntary sector to identify current issues that families are experiencing.



We held a focus group with parents and reps to inform the **Short Breaks Offer and statement** and to inform future commissioning priorities and next steps.

Supporting teenagers

We developed and delivered two **post 16 Education, Training and Employment information workshops**.

We added a range of **employment and Post 16 Padlets** on the Local Offer.

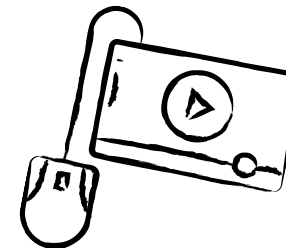


We spoke with teenagers to continue shaping the **Bromley Local Offer for Young People**.

Informing parents and carers

We delivered **EHCP annual review information sessions** to parent and carers for young people in year 8 and year 9,

We held the **monthly virtual EHC needs assessments information workshops**.



We hosted a **SEND Network Champion event** which is open to all professionals working with children and young people with SEND in the borough and parent and carers.

Understanding the lived experience

We attended **parent coffee mornings** at CASPA Tots and Petts Wood Special Needs Playgroup to hear lived experiences and to offer information and support.



We met with **parents to discuss their experience** of the Autism diagnosis process.



We facilitated two sessions on the **first phase of Project ME** for parent and carers from Asian, Black and other ethnic heritages.