



THE LONDON BOROUGH



# Extra Care Housing

## Your move to independence

[bromley.gov.uk/extracarehousing](https://www.bromley.gov.uk/extracarehousing)

2020 - 2021

# Contents

**03**

Introduction

**04**

Your own front door

**05**

Assessment of need

**06**

Care and support

**08**

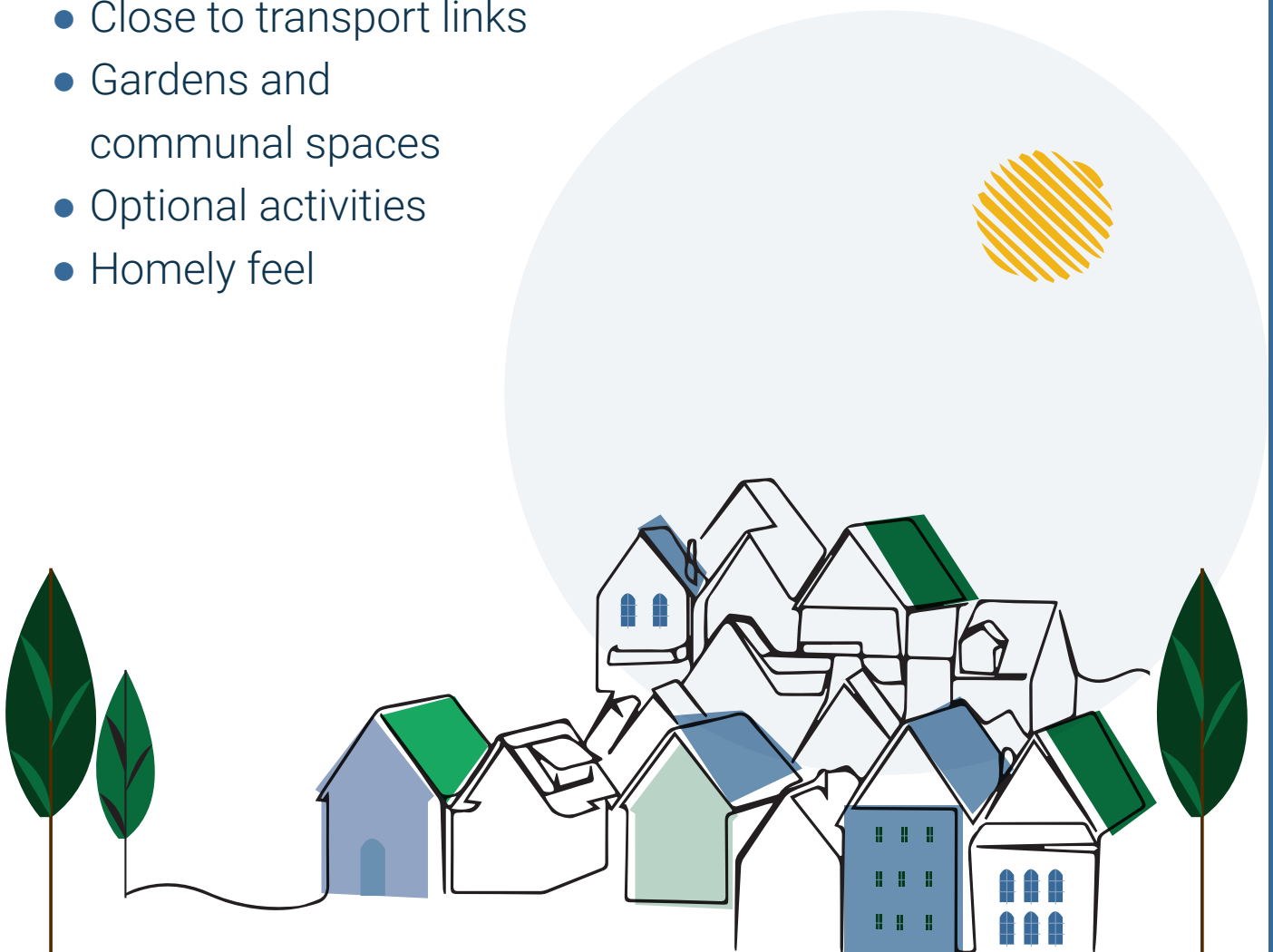
Extra care housing schemes

**10**

Find out more

# Introduction

- Six schemes across the borough
- 1 and 2 bedroom properties
- Comfortable, flexible and adapted accommodation
- On-site staff day and night
- Close to transport links
- Gardens and communal spaces
- Optional activities
- Homely feel



# Your own front door

Our Extra Care Housing is available for those aged 55 years and over, who have a range of care and support needs but require additional support.

Extra Care Housing offers the freedom to continue living independently in the community within a self-contained property, as a tenant with tenant's rights and with on-site care and support services, tailored to meet your needs. It also has the benefit of enabling couples, who may have very different care needs, to stay together rather than one leaving to move to residential care.

We offer a range of accommodation from studio apartments to one and two bedrooms. These are allocated based on availability to meet your current and future needs.

Your accommodation will be provided under your own tenancy agreement and offer your own front door, your own kitchen, your own bedroom and your own furnishings (at your own cost).



## Key features include

- Modern fitted kitchen
- Integrated electric oven, hob and extractor hood
- Fridge/freezer
- Plumbing for washing machine or dishwasher
- Bathroom with shower/ wet room
- Built-in cupboard space
- Carpet in living room and bedrooms (this can be changed at your own cost)
- Some schemes will accommodate taking your pet

# Assessment of need

An assessment will be completed by a Care Manager who will aim to support you in your current home where possible. However, if this is no longer appropriate a move to extra care housing may enable you to remain living safely in the community and enhance the quality of your



## Eligibility Criteria

You...

- live in Bromley
- are over 55 years of age
- are already receiving or entitled to a personal budget to meet assessed social care needs from the Council
- have a physical or sensory disability, learning disability, or have been diagnosed with early on-set dementia or a dementia-related disability
- have the capacity to sign a tenancy agreement, or have someone with a power of attorney or deputyship who can sign on your behalf
- agree to a financial assessment

...and the relevant housing association are prepared to offer you a tenancy.



## Outcome of Assessment

If the Council supports the assessment outcome, a nomination will be sent to the housing provider who will meet with you to discuss your tenancy. You will also meet with the Care Provider to discuss what type of care plan you will require.



## Financial Assessment

How much you pay for your housing and rent costs will depend on your financial circumstances. The Council will carry out a financial assessment to determine what your contribution should be towards your care and support needs.

# Care and support

## Housing Provider

The Housing Manager is your point of contact during office hours as they are responsible for the day to day running of the scheme and responsible for all maintenance issues within the building.

## Your Tenancy











A tenancy will be created to include rent and service charges to be paid to the Housing Provider. It will also state the amount you will pay for water and heating.

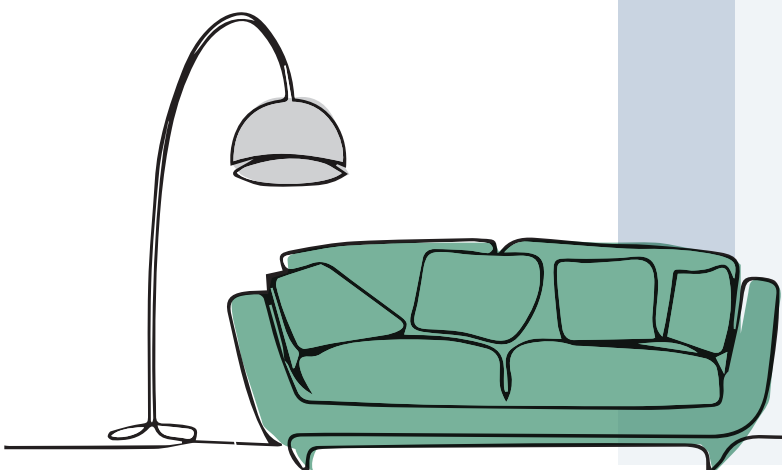
## Restaurant Service

A restaurant service is included in our three new schemes with the low cost of meals included as part of the resident's service agreement.



## Your facilities

-  Lounge
-  Dining Facilities
-  Hair & Beauty Salon
-  Activity Room
-  Bicycle/Scooter Store
-  Laundry Room
-  Gardens
-  Guest Room for family to stay
-  On-site Shop (Crown Meadow Court only)
-  Cinema (Crown Meadow Court Only)



Your care and support is provided through a team of professional care staff seven days per week. Their role is to support you to remain as independent as possible in your new home and they will meet with you to discuss and agree your care and support plan which will be sensitive to your cultural needs and wishes.



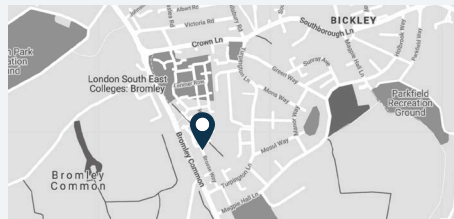
### **The Care Providers can**

- Assist or supervise with your personal care
- Supervise your medication
- Support you during the night should this be needed
- Organise daily activities
- Ensure your apartment is clean and comfortable
- Support you in the preparation of meals or escorting you to the restaurant (where applicable)
- Liaise with your GP and family

The schemes offer a variety of activities and events to suit all tastes and these are provided in the communal and meeting areas where there is also the opportunity to meet your friends and family outside of your apartment.

# Extra Care Housing Schemes

## Crown Meadow Court



📍 Brosse Way, Bromley BR2 8FE  
☎️ 020 8462 1006

**Facilities:**

- Dining facilities
- 1&2 bedrooms
- Cinema
- Hairdresser
- Shop on site

🚏 **Bus Routes:**

61, 261, 358, 320, 336

## Regency Court



📍 Mackintosh Street, Bromley BR2 9GL  
☎️ 020 8460 3142

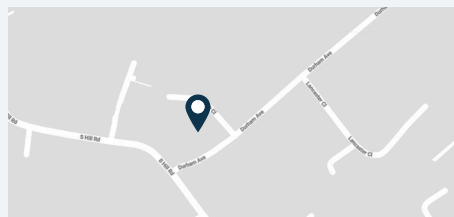
**Facilities:**

- Dining facilities
- Hairdresser

🚏 **Bus Routes:**

208, 61, 261, 358, 320

## Durham House



📍 Durham Avenue, Shortlands, BR2 0RD  
☎️ 0300 100 0303

**Facilities:**

- Communal Dinning

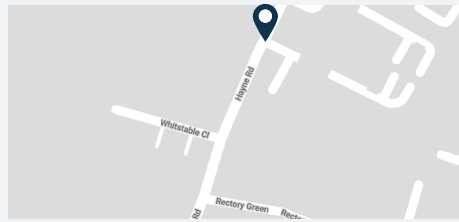
🚏 **Bus Routes:**

138, 162, 638, N3



# Extra Care Housing Schemes

## Norton Court



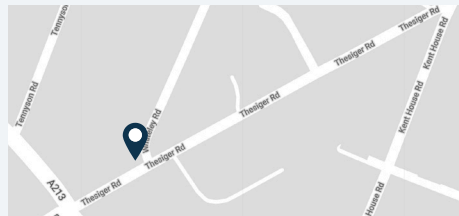
**Bus Routes:**

352, 194, 227, 354, 358

**📍** Hayne Road, Beckenham, BR3 4XF

**☎** 0300 100 0303

## Sutherland Court



**Facilities:**

- Dining Facilities
- Hairdresser

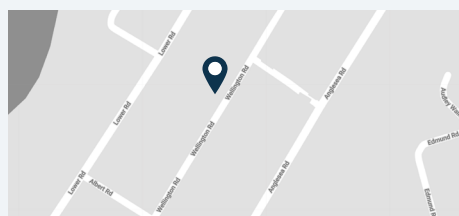
**Bus Routes:**

75, 194, 356

**📍** Thesiger Road, Penge

**☎** 0800 280 2575

## Apsley Court



**Bus Routes:**

R3, R4, R6

**📍** 100 Wellington Road, Orpington, BR5 4AQ

**☎** 0800 432 0077

# Find out more

“Having somewhere like this has enabled us to remain together”  
**Ken & Peggy**

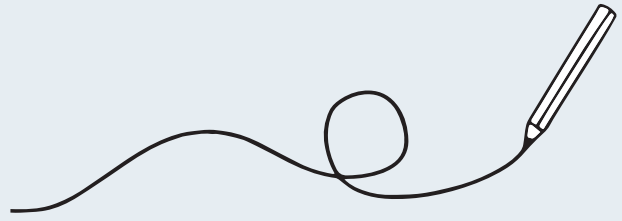
“The move to extra care housing has had a positive impact on our quality of life by being together”  
**Pauline and Danelda**

“I am very happy and contented in my new surroundings and enjoy the company of my neighbours.”  
**Evelyn**

“The staff have made me feel welcome and have helped me to settle in my new apartment”  
**Ron**

**For more Information contact us:**  
**020 8462 7777**  
**[bromley.gov.uk/extracarehousing](https://www.bromley.gov.uk/extracarehousing)**

# Notes Page



---

---

---

---

---

---

---

---

---

---

---

---

---

---

---

---

---

---

---

---

---

---

---

---

---

---

---

---



THE LONDON BOROUGH

Civic Centre, Stockwell Close, Bromley, Kent, BR1 3UH